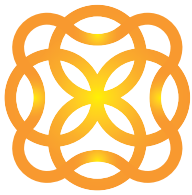


A year of transformation...
Napa Valley Hospice & Adult Day Services
is now



Collabria Care

Collabria Hospice

Report
Gratitude

2015

Honoring the Past, Preparing for the Future

Napa Valley Hospice & Adult Day Services



Dear friends,
Many of you have asked why we recently changed our name.

Quite simply, **our organization had outpaced its name. Napa Valley Hospice & Adult Day Services (NVHADS) no longer adequately described the continuum of care and resources we provide to those we serve, nor positioned our organization to meet the future needs of our community.**

What started in 1979 as a small hospice has grown into a vibrant nonprofit organization with more than 125 employees and 130 volunteers — one that has redefined health care for those in our community facing the transitions of aging, serious illness, or the end of life.

The last few years alone, we added several new programs — including Transitions Palliative Care Program, Hospital to Home, and Partners in Palliative Care with Partnership HealthPlan — to the existing Hospice and Adult Day Services. Our service area has grown, too, both within Napa County and into neighboring Solano and Sonoma Counties.

The demand for these expanded services is expected to increase significantly in the coming years with the maturation of the Baby Boomer generation. We will have the largest number of elders in history, who will live longer than any previous generation, and consequently, will experience more chronic conditions.

Our name change was not a project taken lightly. We researched the current and projected needed scope of services in our community, how to best structure the organization to meet those needs, and how to rename the organization to reflect our continuum of care. Among our findings:

- NVHADS has an excellent reputation.
- The concept of hospice is well-known and respected, but the word “Hospice” in our name made people reluctant to come to us for challenges relating to aging or serious illness — they thought “Hospice” in our name meant our services were only for the terminally ill.
- Resources for aging adults are hard to find and evaluate.
- Community members we spoke with want a partner to help them navigate the system and smooth transitions in their care — without losing control of the process.

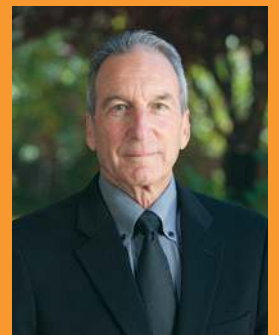
As a result, we’ve more clearly delineated our services as two programs under one umbrella: Collabria Care (see illustration on next page). The name Collabria Care is a coined term that connotes collaboration, which is at the heart of all we do.

With this, we are ready to meet the needs of our community going forward, with the same compassion, dignity and connection as before. We thank you for your support — past, present and future.

— Linda Gibson, Collabria Care President & CEO

“Collabria Care remains the same long-standing, nonprofit, community organization — with the same staff and volunteers — that has served Napa County for almost four decades. With services more clearly defined under the Collabria umbrella, we will be able to meet the projected increased need for services and resources, and better support patients and their families navigating the medical, practical, and emotional transitions of aging, serious illness, or end of life.”

— Steve Silva, Chair, Collabria Care Board of Directors



is now Collabria Care™



Collabria Care™

This is the expanded home of programs for those with serious illness including Alzheimer’s disease, and for our palliative care services.

Alzheimer’s Services provides resources and comprehensive services for those with Alzheimer’s disease or another form of dementia.

Day Program provides a safe and caring environment, and individualized plans for each participant’s unique needs, including state-of-the-art nursing care, rehabilitative therapies, social service support, social engagement, stimulation, and transportation of participants to and from our light-filled facility each day.

Palliative Services provides an extra layer of support for those suffering from serious illness — such as cancer, heart disease, pulmonary disease, kidney failure, Alzheimer’s disease, or Parkinson’s disease — by working closely with a patient’s existing medical team to manage symptoms, prevent or relieve suffering, and support the best possible quality of life for patients and their families.

Collabria Hospice™

This program continues to provide specialized care addressing the needs of individuals and families facing the end of life. We offer a physician-directed team of specially trained, compassionate professionals and volunteers, committed to the physical, emotional, and spiritual needs of patients, caregivers, and families.

Collabria Care FAQ

Were you purchased or did you merge with another organization?

No, we are the same nonprofit organization as before, just with a new name.

Why isn’t Napa Valley in the new name?

Our service area has expanded beyond the Napa Valley to include the entire county, as well as neighboring communities.

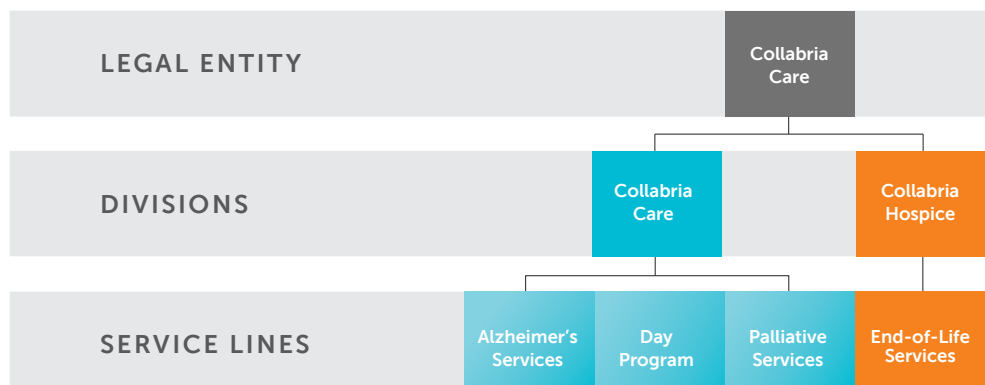
Where is Adult Day Services?

The new name for Adult Day Services (ADS) is the Day Program. It is the same award-winning, patient-centered care program for those with serious illnesses and/or dementia.

Aside from the name, how will this change the organization?

While we will have the same quality of service and dedicated staff and volunteers, it will:

- Ensure we have the proper structure and capacity to accommodate future needs. The largest generation—the Baby Boomers—will live longer than any previous group and, consequently, will be more likely to suffer one or more serious illnesses.
- Expand models of care beyond what is available today to address the significant projected increase in the incidence of Alzheimer’s disease and other dementias.



Collabria Care Board of Directors

Steve Silva, Chair
 Daniel Dwyer, Vice Chair
 Kathi Metro, Treasurer
 Deborah Macdonald, Secretary
 Linda Gibson, Collabria President & CEO
 Eileen Crane
 Martha Dameron
 Debra Dommen
 Jon Logan
 Andrew J. Nicks MD, FACR
 Valerie Peebles*
 Mary Stephenson
 Tricia Williams
 *completed term

Honorary Board

California State Assemblyman
 Bill Dodd
 U.S. Representative Mike Thompson
 Gordon Huether

Gratitude Report Editorial Team

Joanne Sutro, Director of Development
 & Communications
 Jennifer McConnehey, Editor
 Kristina Streeter, Project Manager &
 Copywriter
 Jason Tinacci, Jed Ogle, Robbie Hayes
 Photographers
 Napa Printing | Design Studio & Mail
 Center, Design and Production

2015 Financials

Where the money comes from



Program Revenue	9,630,919	63%
Grants	1,546,014	10%
Events	623,684	4%
Thrift Store	287,087	2%
Annual Contributions & Capital Campaign*	3,213,433	21%
Total	15,301,137	

*Includes a substantial bequest currently designated as a reserve fund, to ensure long-term sustainability.

Where the money goes



Program Expenses	9,011,690	76%
Fundraising & Retail	1,336,428	11%
Management & General	1,542,035	13%
Total	11,890,153	





Legacy Society

Navigating Life's Highs and Lows: Noreen Thomas

Noreen Thomas had the stories, savoir-faire, and ability to navigate that befit a person who had lived much of her life abroad and loved to travel. Her husband Al's work took them from Europe to the Middle East to the Caribbean, and even after "settling down" in Napa Valley she continued to travel far and wide with longtime friend Gloria Hazell.

The two women met in 1982, after Noreen and Al moved from Grenada to Florida, next door to Gloria's mother. The two couples became fast friends, and remained so after both moved a few years later (Gloria and husband to the San Luis Obispo area, Noreen & Al to Napa Valley). By then, Al was no longer as interested in traveling, and Gloria's husband had health issues, so the women explored Europe and other destinations together.

"I drove, Noreen navigated," is how Gloria sums it up. "She was the perfect travel companion."

Noreen may have been a skilled navigator, but 2003 brought uncharted territory. Al's health rapidly declined and he went on Collabria Hospice care. "It was Noreen's first experience with hospice," said Director of Development & Communications Joanne Sutro, "and through Al, she saw firsthand all that it had to offer. Noreen embraced hospice and described the care Al received as 'phenomenal.'"

She was so deeply moved by the experience that, after Al passed away in October of that year, she chose to include Collabria Care in her estate plans. Noreen passed away in 2014, and stipulated that 80% of her estate go to Collabria Care.

Her generous gift will help provide Collabria Care with a financial safety net. "These funds will support many of the free services we provide to our community, and will allow us to continue to operate in the face of adversity, whether that is an economic downturn or a natural disaster," explains Collabria Care President & CEO Linda Gibson. "As Noreen knew, you can't always avoid adversity, but you can prepare, and having an emergency fund provides an extra layer of stability and sustainability for our organization."

There are many ways to make a contribution that is meaningful to you, our organization, and the community we serve—without giving up assets now, and many of which offer tax benefits. To find out which kinds of donations best meet your goals, contact Joanne Sutro at 707.254.4166 or jsutro@collabriacare.org.

"Noreen always talked about how much peace Hospice brought Al," said Joanne. "And knowing that she could help ensure that peace for others in our community who are facing serious illness gave her a sense of comfort, as well. We are incredibly grateful to Noreen for helping us protect the long-term viability of this organization."

If you've already named our organization in your will or estate...

You do not have to pay an attorney to update your will or trust to reflect our new name. Simply clip a note to the front of your will or trust documents indicating that Napa Valley

Hospice & Adult Day Services has changed its name to Collabria Care. And please let us know, so that we may thank you and recognize you as a member of our Legacy Society!

Hospice at a Glance

Total number of patients served in 2015: 638



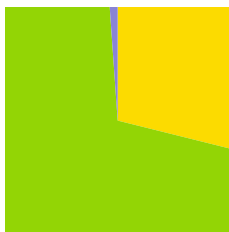
Patients served by diagnosis:

- Cancer: 32%
- Dementia: 19%
- Cardiac disease: 15%
- Lung disease: 9%
- Stroke: 4%
- Renal disease: 3%
- Liver disease: 3%
- Other: 15%



Patients by age:

- 1 - 40: 1%
- 40 - 64: 11%
- 65 - 84: 35%
- 85+: 53%



Patients by location:

- Upvalley: 29%
(Yountville, Oakville, Rutherford, St. Helena, Angwin, Calistoga, Pope Valley and Lake Berryessa)
- City of Napa and American Canyon: 70%
- Solano & Sonoma Counties: 1%



Collabria Hospice Offers Patients a "Sentimental Journey"

In its ongoing efforts to meet not only the physical but emotional and spiritual needs of its patients, Collabria Care partnered with American Medical Response (AMR) to offer "Sentimental Journey." Similar in concept to "Make A Wish," Sentimental Journey provides hospice patients — some of whom may not have been able to leave their facility or home for months, except for doctor appointment — to fulfill their wish of a visit to a special place of their choice.

Sports enthusiast Joyce Donegan took our first "Sentimental Journey." Joyce, who lived at the Veteran's Home in Yountville, often attended baseball games at the Home's Borman Field, but with declining health, it had become impossible for her to do so. Collabria Care organized a special outing



to a game for her. Four generations of Joyce's family joined her, both teams' players welcomed her with roses, one by one, and she took to the mound to make the ceremonial first pitch. Joyce enjoyed five innings before returning home. For Joyce it was a chance to meet old friends, share memories, and visit one of her favorite places. We're honored to make experiences like these possible for hospice patients.

Collabria Hospice Program Receives Outstanding Achievement Award

In recognition of its innovative hospice and palliative care programs, the California Hospice and Palliative Care Association presented Collabria Care this award for raising the standard for palliative and end-of-life care, serving as a model for the profession and creating awareness of the importance of excellence in serving patients near the end of life.

Day Program Wins the NuStep Pinnacle Gold Award

“It is the Day Program’s exceptional efforts and holistic approach for engaging older adults with meaningful programs, positive environments, and supportive relationships that help participants — and their caregivers — to thrive that put this program at the top of our list.” — Steve Sarns, NuStep Vice President of Sales & Marketing

The Day Program took the gold in the NuStep Pinnacle Award competition, from a field of senior centers across the US and Canada. NuStep established the Pinnacle Award to “spotlight exceptional efforts in senior living communities and senior centers that best integrate a culture of whole-person wellness throughout their organization.”

“...the Day Program at Collabria Care has thoughtfully and intentionally fostered wellness throughout the organization, creating a culture that encourages ‘each and every’ individual to see the possibilities for living well...these organizations show how committing to wellness can change organizations, as well as the lives of the people they serve.” —The Journal on Active Aging, Jan/Feb 2016, on the NuStep Pinnacle Award winners

Bridging the Generation Gap

Tapestries

Students from New Technology High School are collaborating with Day Program participants on “Tapestries,” a project about voice in writing and oral communication.

While studying brain health and ways to improve it, the students are creating projects around art, music, sleep, exercise, language, and eating well, which they share with participants. Day Program participants have the opportunity to experience how young people think and communicate now, and to engage with people outside of their usual circle. In turn, the students have learned about intergenerational communication, etiquette, sensitivity, and listening skills.

“I’ve noticed that the students have gotten over their fear of talking to older adults,” said New Technology High School teacher SuzAnne Regalia, who spearheaded the project. “They enjoy talking with them as equals and now recognize that there are some universal truths about people of all ages.”

Music & Memory

“Research shows that favorite songs can tap deep memories, enabling those with dementia

and other chronic cognitive and physical impairments to feel like themselves again, able to reconnect with others,” said Director of Operations Celine Regalia. “After implementing the “Music & Memory” program in our Day Program, we’ve seen a marked improvement in participants’ ability to converse, socialize, and stay present.”

Working with 20 students from New Technology High, staff interviewed participants to glean their favorite music genres, artists and songs to create a personalized playlist for each participant, which is then downloaded onto an MP3 player. These are available for participants to enjoy their playlist throughout the day.



Day Program at a Glance

Total participants enrolled in 2015: 133



Participants by age:

31-45: 3% ■ 65-84: 68% ■
46-64: 13% ■ 85+: 16% ■



Participants by primary diagnosis:

Alzheimer’s disease/
Dementia: 54% ■
Diabetes: 12% ■
Cardiac disease: 10% ■
Stroke: 8% ■
Parkinson’s disease: 4% ■
Arthritis/osteoporosis: 2% ■
Musculoskeletal disease: 2% ■
Other: 8% ■



Participants by residence:

Napa: 68% ■
Solano County: 13% ■
American Canyon: 10% ■
Upvalley: 8% ■
Other: 1% ■

Palliative Care at a Glance

Total patients served in 2015: 156



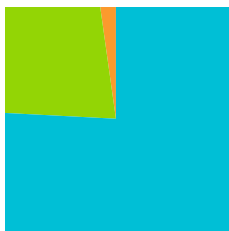
Patients by age:

- 19-40: 1%
- 41-64: 19%
- 65-84: 41%
- 85+: 39%



Patients by primary diagnosis:

- Cancer: 29%
- Other: 71% (heart disease, COPD/emphysema, chronic kidney disease, dementia)



Patients by location:

- City of Napa: 76%
- Upvalley: 22%
- American Canyon: 2%



Fourth Annual "Advances in Palliative Care" Conference Draws At-Capacity Audience

Co-sponsored by Partnership HealthPlan of California

"This has been a refreshing approach...and gives me hope that more expert help is on the way for the Baby Boomers!" R.N attendee

While the field of palliative care has experienced huge growth, the availability of trained palliative care specialists hasn't kept pace. In response, Collabria Care, with co-sponsor Partnership HealthPlan of California, hosts an annual conference that brings together primary care and palliative care providers for professional education and an arena to inspire and support each other. The 2015 conference topped out at 133 attendees, and featured speakers from University of California, San Francisco, Kaiser Permanente, and Collabria Care, covering topics such as opioid misuse and diversion, advance health care planning, ethics, best practices, and implementing palliative care in nursing homes.

The fifth annual "Advances in Palliative Care" conference will take place on October 20 and 21, 2016. For more information, visit www.collabriacare.org/apcc.

Collabria Care and Partnership HealthPlan of California Serve as Test Model for New Medi-Cal Palliative Care Benefit

Results from the six-month pilot will help guide the process for Medi-Cal when it launches this benefit statewide later this year for low-income individuals with serious illnesses.

There are more than 28,000 people enrolled in Medi-Cal in Napa County alone. To meet the increased demand and ensure the quality of experience of both English and Spanish speaking patients, Collabria Care is adding another palliative care RN nurse navigator and another community health worker, both of whom will be bilingual, to its staff.

What is palliative care?

Palliative care is specialized medical care focused on providing relief from symptoms and stress for those living with serious illness, such as cancer, heart disease, COPD/emphysema, chronic kidney disease, Alzheimer's disease and other forms of dementia.

Palliative care may be provided by a team of palliative care doctors, nurses and other specialists who work together with a patient's own doctors. It is appropriate at any age and at any stage in a serious illness and can be provided along with curative treatment. Ultimately, the goal is to improve quality of life for both the patient and the family.*

* definition courtesy of Center to Advance Palliative Care



Volunteer Appreciation Party

Volunteer Program Designated as "Point of Light Service Enterprise"

Only 200 organizations attain the status annually

Through the help of the Center for Volunteer and Nonprofit Leadership, Collabria Care was one of approximately 200 nonprofit organizations in the U.S. to be designated as a "Point of Light Service Enterprise" in 2015. This status recognizes Collabria Care for making volunteers central to its operations across all levels of its work, to achieve social impact.

Collabria Care, thank you as always, for your dedication to the career aspirations of our students! You are a valued partner in our Internship Program!

– Napa Valley Unified School District Career Readiness Office

Volunteers at a Glance

Volunteers in 2015: 130
Hours donated in 2015: 12,568



Volunteer hours by program

- Hospice: 4,597
- Day Program: 3,731
- Fundraising/Development/
Events: 1,217
- Palliative Care Services: 402
- La Boheme & Act II: 1,692
- Board of Directors: 929

Volunteer time value: \$346,751*

**Based on \$27.59/hour, as identified by the Independent Sector for California*



Kaye Hudson

Why do you volunteer?

"I had the opportunity to learn about hospice through my mother's experience with hospice, and from that I feel Collabria Care is a very worthy organization. They were terrific at giving Mother what she wanted at the end of her life. They honored her desires and her choices."

What do you do?

"I have worked at the front desk for 10 years. Over that time, I have also helped in the kitchen at the Day Program and worked some of the special events, such as the Gala. When I work at the front desk, I also help Development with their filing and other projects."

Why do you feel you make a difference?

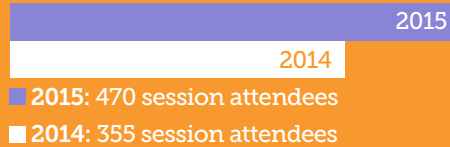
"ALL the volunteers make a difference, most importantly for the life of programs. Our help saves Collabria Care money and time that they can put toward care and programs."

What is it that makes you return each week?

"It's one of those commitments that feels good, not to mention I enjoy the camaraderie with the other volunteers and the professional staff. And again, knowing my help has a direct impact: saving money and time that can be better spent delivering quality services to our community."

Community Bereavement Services at a Glance

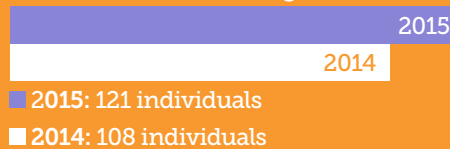
Drop-in support groups:



Learning to Live with Loss 8-week support groups (English and Spanish)



Individual counseling sessions:



Followup outreach to families:



I can't recommend the 8-week grief support group and Thursday drop-in meetings enough! Janeen has helped me on my road to recovering from my loss. She is so patient, kind, and really so supportive. I say it a lot, I don't think I would have made it without our Hospice! The class and the drop-in meetings are free...and the experience is priceless!

—Patricia Trimble

Community Partnerships

Our deepest thanks to the following key funding partners for generously supporting our vital programs and essential services.

Grant Support

Alliance for Leadership and Education
Area Agency on Aging
Coalition for Compassionate Care of California
The Edward F. Ducommun Foundation
Peter A. & Vernice H. Gasser Foundation
Kaiser Permanente Napa-Solano Community Benefit
The McNeely Foundation
Giles W. & Elise G. Mead Foundation
Napa Fund, Napa Valley Community Foundation
Napa Valley Community Foundation
Napa Valley Vintners
Queen of the Valley Medical Center Community Outreach
St. Joseph Health Community Partnership Fund
Wayne Grey Wilson Foundation

Annual Sponsors

Aegis Living of Napa
Alta Mesa Group
Castello di Amorosa
Diageo Chateau & Estate Wines

Napa Printing
Design Studio & Mail Center
Orchard Supply Hardware
Rombauer Vineyards, Inc.
Senior Helpers Caring In-Home Companions
St. Helena Hospital
Steve Silva Plumbing, Inc.
Your Home Nursing Services

President's Circle Sponsors

Black Stallion Winery
Humanitas Wines
Silver Oak Cellars

Champions of Compassion

Community-Led Fundraisers
Bergin Glass Impressions
Bourassa Vineyards
Encore Glass
Fry's.com Open
Give!Guide
Hall Cabernet Cookoff
Humanitas Wines
Il Posto Trattoria
The Roost



Thanks to Silver Oak Cellars for hosting our November President's Circle event, "Building Resilience"

2015 Donations

We thank all of our donors for their generous support in 2015, including those whose heartfelt donations of less than \$100 are not listed due to space limitations.

\$25,000 AND UP

Alliance for Leadership and Education
Area Agency on Aging
Serving Napa-Solano
Auction Napa Valley
Peter A. & Vernice H. Gasser Foundation
Valerie and Robert Peebles
Queen of the Valley Medical Center Community Outreach
Maria and Robert Torres
Evalyn and Louis "Bob" Trinchero
Wayne Grey Wilson Foundation
Your Home Nursing Services
Anonymous

\$10,000 TO \$24,999

California Communications Access Foundation
Fair Wind Foundation
Sung Jin and Frank Ingriselli
Pepper and Michael Jackson
Gail and Robert Jacobs
Kaiser Permanente Napa-Solano Community Benefit
Dana and Douglas McKellar
The McNeely Foundation
Marilyn and Richard Mendelson
Napa Fund, Napa Valley Community Foundation
St. Helena Hospital
St. Joseph Health
Community Partnership Fund
Janet and Alan Stanford
Steven and Claire Stull
Family Foundation
The George and Lena Valente Foundation
Elizabeth and Robert Van Dyk
Anonymous

\$5,000 TO \$9,999

Daphne and Bart Araujo
Annie and Richard Bennett
Martha and Emery Dameron
Linda and Larry Dreyer
Far Niente Winery
Linda J. Gibson
Hall Napa Valley
Cody G. Kirkham
Maggetti Fund at Napa Valley Community Foundation
Melanson Family Foundation
Napa Valley Community Foundation
Andrea and Bill Phelps

Senior Helpers Caring In-Home Companions
Elizabeth and W. Clarke Swanson
Barbara and Clay Timon
Maryanne Wedner
Elizabeth S. Wells Charitable Lead Unitrust
Wells Fargo Private Bank, St. Helena
Diane B. Wilsey
Anonymous (2)

\$2,500 TO \$4,999

Mary and Bill Agee
Alta Mesa Group, LLC
Marilyn and Paul Asmuth
AUL Corporation
Bank of Napa
Bob Barbarick
Ulla and John Brown
John P. Buehler, Jr.
Jorge Rey-Prada
and Robert Clegg
The Doctors Management Company
Domaine Careros
Margaret Duckhorn
and James Ukropina
Robin and John Dunbar
Kathleen A. East
and Daniel P. Dwyer
ETS Laboratories
Barbara and James Fetherston
The Robert F. Ford Charitable Foundation
Julie and Patrick Garvey
Annette and Dennis Keller
Morgan L. Morgan
and Phillip A. Lamoreaux
Deborah and Roddy Macdonald
Susan and David Martin
Foundation
Anne and Chuck McMinn
Medline
Ron Miller
Barbara and Donald Niemann
Outcome Resources, LLC
Christopher Peacock
Foundation
Celia Ramsay
and Kent Rasmussen
RBO & Co., LLC
Laura and KR Rombauer
Jackie and John Savoy
Marjorie and Frederick Schweizer
Gail and Paul Silvestri
Streich Family Endowment
at Napa Valley Community Foundation

Treadway & Wigger Funeral Chapel
Marian J. Berg
and David G. Wehlitz
Jeanette and Mark Willey

\$1,000 TO \$2,499

Aegis of Napa
Gertrudis C. Agcaoili
Trisha Arnold
Cheryl J. Bailly-Jacobs
Bank of Marin
Pieter and Susan Bax Charitable Fund
Honorable Richard A. Bennett and Linda K. MacDonald
Carol Berg
Ruth Berggren
Kathryn Coleman
and John W. Blasingame
Bourassa Vineyards
Victor F. Bourassa
Donna and Charles Broder
Susan C. Burchill
Kingsley Burns
James Schull
and Richard Buth
Elfy Carpenter
Patricia and Albert Ceresa
Jane and Roy Chapin
Sandra Clark
Coalition For Compassionate Care Of California
Jeannette M. Coburn
Anita and David Cummings
De La Salle Christian Brothers
Shirley and Paul Dean
Nancy and Robert Eberlin
First Presbyterian Church
Diane and David Gandara
Karen and Robert Gunst
Hall Cabernet Cookoff
(Craig and Kathryn Hall Foundation)
Billie A. Hewitt
Michelle and Keith Hock
Holcomb Downtown Napa Properties
Andrew M. Isaacs
Corky Johnson
Claudia and Thomas Johnson
Elaine and Rick Jones
Shawn M. Jones
The Frank and Janice Klobas Family Charitable Gift Fund
La Sirena Winery
Mary and Tom Le Masters
Lee Foundation
Martha Raya Lochel
Carole E. MacElhenny

Elizabeth J. Martini
Eric J. Meagher
Kathi Metro and Alan Chinberg
Ellie Meyer Fund at Napa Valley Community Foundation
Margrit B. Mondavi
Deborah and Timothy Moore
Morrison Funeral Chapel
Betsy and Steve Moulds
Napa Jet Center
Napa Valley Christian Church
Napa Valley Masonic Lodge No. 93
Maritza and Warren Nelson
Nixon Peabody
JoAline and David Olson
Pace Supply Corporation
Betsy and Christopher Peacock
Jean Phillips
Rabobank-Napa
Beverly and Tom Rinaldi
Dorothy and Jim Roberts
Schwab Fund for Charitable Giving
Susan and Michael Shifflett
Steve Silva Plumbing, Inc.
Skyview Memorial Lawn
Spiriterra Vineyards
Mary Stephenson and Laurence Papale
Joanne Sutro and Wayne Cain
Emma Swain
The Edmund F. Ducommun Foundation
Jan Treadway
Ellen Udoff
Van Dyk Family Wines
Van Dyk Health Care, Inc.
VerusCare, Inc.
Delia Viader
Leslie Wilks
Julia Winiarski
Anonymous (2)

\$500 TO \$999

Bank Direct Capital
Finance, LLC
Stephen J. Bardesson
Martha E. Bothwell
Tom Bougetz
Austin Burns
Dolores and Jack Cakebread
Calistoga Community Chest
Jim and Barbara Capolongo Fund
Stephen L. Carbone
Lucinda and Charles Crocker
Naoko Dalla Valle

Sandra Dijkstra Literary Agency
Lisa U. and David A. Doshier
Andrew Fenton
First American Title Co. of Napa
Iginio P. Fontana
Susan and Paul Frank
Elaine and David Freed
Frys.com
Gary Gerhardt
Arthur Goodrich
Betsy and Alan Gustafson
Nancy Hanson
Helen Harris and Elvon Harris
Edward Hawkins, Jr.
Judith Henkels
Katherine J. and Steven C. Herber
Sandra Hyman
Patricia Ruthnick and Chris Jay
Suzanne and Robert Jessell
Carol Kieschnick
Margaret and Paul Krsek
Lise and Thomas Lawson
Richard Maher
Mark Maltun
Colleen J. May
Ginger and John McBroom
Jamie McNamara
Mechanics Bank
Betsy and John Miklos
Brian Monske
Majbritt Murdock
Judy Naimo and Kim Cappelle
Napa Ford Lincoln
Napa Valley Emergency Medical Group
Napa Valley Memorial Park
Heather and Robert Nations
Kathleen P. Patterson and Chuck Griffin
Heather Pena
Kim and Kyle Rossler
Joseph Shockey
Maria Manetti and Jan Shrem
Aura Silva
Cameron Silva
Kathleen and Stephen Silva
Silverado Art and Garden Club
Sandra and Gordon Sims
Rebecca and Ronald Stradiotto
Catherine Stroup
Claire and Steven Stull
Lyndal and Howard Walker
Carol T. and Robert C. Williams

- Katherine Ohlandt
and Jerry Wirkus
ZD Wines
Sherlyn and Dave Zumwalt
Anonymous (2)
- \$100 TO \$499**
Shirley and Chuck Adams
J. Patrick Adamson
Candace and Ismail Akman
Alderworks Legacy Fund at
Fidelity Charitable Gift
Fund
Gail Alexander
Donna R. Altes
Ameriprise Financial Annual
Giving Campaign
AMR Napa County
Frances and Paul Anamosa
Kathleen Anamosa
and Jim Taggard
Mary Ann Anamosa
Robert S. Angel
Nina and Lowell Antze
Jane and Marvin Atkinson
B/M/M Gratitude Fund
at Schwab Fund for
Charitable Giving
Lisa and Stephen Banks
Heidi and Bo Barrett
Linda and D. Hank Bathey
Constance L. Battisti
Bell Products, Inc.
Mary B. Bergerson and
Glenn R. Heath
Rebecca and Zack Berkowitz
Teresa and Kenneth
Bernards
Arlene and Michael
Bernstein
Kathy J. Bertolino
and Richard J. Chesi
Jennifer and Robert Blevans
Vida Blue
Kathleen Boe
Everett Boerger
H. Kathleen and Lance
Bonds
Emilie "M" A. Borge
Charles S. Bouril
Clifford Bower
Stacy and Robert Bressler
Nancy L. Brimhall
Kyle Bocker
Joanne F. Brown
Communications
Thomas B. Brown
Rose and John Burkholder
Sara Cakebread
Alice Cannon
Andrea and Steven M.
Cardey
Kellie and Steve Carlin
Carpet One Design Center
Carson Valley Accounting,
LLC
Constance and John Cheeley
Coldwell Banker Brokers of
the Valley - Napa
Coldwell Banker Commercial
Brokers of the Valley
John C. Coleman, Jr.
- Congregation Beth Shalom
of Napa Valley
Coombs & Dunlap, LLP
Costa Del Sol, LLC DBA
Dearwines
Adele G. Cotter
and James C. Cotter, MD
Maureen and James Cox
Chris Craiker
Patricia and John Danby
Richard V. Day, Esquire
Kathleen de Vries
John Del Bondio
David A. Diamond
Debra and Mark Dommen
Naomi Dreskin-Anderson,
Esquire
Kary O. and David R.
Duncan
Frank Edmonson
Epsilon Financial Group, Inc.
Kathleen Crawford
and Gary Erickson
Favaro, Lavezzo, Gill, Caretti
& Heppel
Evelyn V. Fielden
Monica S. and David
Finigan
Tina and Robert Fioretti
Denise Flaherty
Terry Fogarty
Joan Foresman
Dreanne Foust
Frisch & Frisch, Attorneys
at Law
Patty and Gary Garaventa
Gary E. Gassner
Nancy and Gary Gates
Gaw, Van Male, Smith,
Myers & Reynolds, PC
William Chiat
and James S. Gladfelter
Rita S. Godward
Golden Living Center
Anne and Matthew Golden
Elizabeth Pressler
and Spencer Graham
James S. Gray
Greater Napa Valley Lions
Club
Cynthia Grupp
Rockford Haines
Karen and James W. Haire
Wheyting and Walter Hampe
Jill Hancock
Donna Hardy
Hearts That Matter Assisted
Living
Laurie and Donald Hefkin
Carole and Bruce Heid
Kate H. Hemphill
Arthur A. Hess, Jr.
Hines Carr Diamond LLP
Christina and Michael
Holcomb
Sherry and Joe Horvath
Christy and Brett Howard
Jean and Doug Howard
Joan and Hilbert Hubble
Geoffrey Hudson
Humanitas Wine Company
- Grant J. Hunt, Jr.
Il Posto Trattoria
Fred Imoto
Indian Springs Resort
Gerald W. Ireland
Jacqueline Jackson
Ruby and William Jamieson
Erick Johnson
James V. Jones, Esquire
Priscilla Jordan
Margaret and Don Judah
Thomas Keller
Wilhelmina L. M.
and John H. Kempkey
Susan and Tor Kenward
Bruce Ketron, Esquire
Lila L. Kiddy
Michael Kimlinger
Knitter & Knitter
Patricia and Randal Koral
Paula Kornell
Hans W. Korve
Dorian Krausz
Susan and Ron Krausz
Kuhlmann Associates
Financial, Inc.
Steve Lambert
Janice C.
and Theodore D. Lassagne
James Laube
Dana and Fran Leavitt
Lora and Gerald Levin
Mary K. Lewis
Ralph Lippert
Diane and John Livingston
Jeanne and Dean Lumbert
Paul Lundahl
Perry W. Lundeen
Gerry Lyon
Martha and Malcolm
Mackenzie
Lawrence P. Maggini
Malloy, Imrie & Vasconi
Insurance Services LLC
Manfred & Hunt, LLP
Michael A. Manfred
Kelli Marchbanks
Mike Maruchau
Kevin D. Massie
Joseph Massucco
Mary J. Mc Laughlin
and Kendall D. Haney
Jennifer and Jason
McConnehey
Martin McDonough
Joyce Hing McGowan
Duane A. McGrath
Sandy and William McIlmoyl
Doris and James McKeever
Michael McKeown
The Meadows of Napa
Valley
Rhoda D. Mills
Maryam Mohsenzadeh
Gisele and George
Monteverdi
Kathleen and Art Morgan
Morse & Brooks
Judith and Charles Morse
John Moser
Al B. Moss
- Jill and Shawn C. Moss
Ray L. Nasuti*
National Association of
Retired Federal Employees
#0281
Carole and Eugene Nelson
Barbara and Steve Nielsen
Diann and George Nielson
Antje and Helmut Oja
Ruthmary and Benjamin
Parmeter
Susan and Stephen Parry
Carolyn and Robert Passore
Millie Pease
Sandra L. and James E.
Perry
Konnie and Bruce Peters
Elizabeth C. Peters
Piner's Nursing Home
& Assisted Living, Inc.
Pintail Roofing
Susan B. Plant
Helia and Bernard Portet
Pro Tones, Inc.
Professional Fiduciary
Management Services
Ronald and Betty Profili
Red Bike Medicine
Redwood Building
Maintenance Co.
M. Luisa and Salvador
Renteria
Mark C. Richmond
Felix Riesenberg
Diane L. Risley
Susan and Carlo Rocca
Melodie and Cory Roche
Karen Roche and Malcolm
Jones
Brandon Rodgers
The Roost
Joan Rorick
Robin and Scott Rose
Shirley Roy
RPM Mortgage
Brad Rugg
Maira and Joseph
Russoniello
Doug Ruthnick
Dana Furia and Rick
Ruthnick
Lola and David Safer
Lucretia and Rex Sawyer
Mary Kay and Daniel Schatz
Bonnie Schindler and Kurt
F. Schindler, DDS
Genevieve and Henry
Schlangen
Carmen Schmidt
Stacy Schultz
H. David Settle
Felicia and Charles
Shinnamon
Silver Leaf Financial Group
Gene L. Smith
Doneen and Jimmy Smith
Dolores Smitkowski
Janet and Randolph
Snowden
Snyder & Company
Accountancy Corporation
- Cleet E. Snyder
Theodore and Mary Snyder
SolarCraft
St. Joseph Health Queen of
the Valley Medical Center
State Farm Insurance
Marla and Brian Steele
Kristina and Brian Streeter
Zoe Strohm
Strong & Hayden
Commercial Real Estate
Markley S. Sutton
David J. Tate
Helene and Kouros Tavakoli
Janelle Teichman and
Michael Teichman, DDS,
MS
Shawna and Glen Terry
James W. Terry
Marjorie and Michael
Thomas
Shawn Thompson
Nina and Valen Threadgall
Brenda and Daniel Tognetti
Philip Togni Vineyard, LP
Turley Wine Cellars
Evelyn M. and C. M. Van
Rijn
Milt Wallace
Mary and Matthew Walter
Sara Waters Design Group
Gayle M. and Harry W.
Willett
Judith Winckler
Carole and James Wolf
Michael Wolf
Wyman Property
Management
Ellen M. York, Esquire
Zeller, Hoff & Zeller, Inc.
Marck Zuehlsdorff
Anonymous (3)
- EMPLOYEES**
Shureen M. Aimar
Damian S. Alvarez
Trisha Arnold
Lynn Drake
Ann L. Erhardt
Lucy and David Franklin
Linda J. Gibson
Susan G. Hefelfinger
Veronna Ladd
Mark Maltun
Jennifer and Jason
McConnehey
Jamie McNamara
Deane and Kenneth Miller
Karen and Mark Proteau
Katharina Ratliff
Celine and SuzAnne Regalia
Jackie and John Savoy
Jo Skeffington-Debski
Joanne Sutro and Wayne
Cain
Erika and Kian Tavakoli
Laura Valencia
Eric and Leslie Vaughan
Carol T. and Robert C.
Williams
Victoria Wolf

MATCHING GIFT COMPANIES

Adobe Systems Inc.
Matching Gift Program
Bank of America Charitable
Foundation Matching Gift
Program
Diageo North America
Matching Gift Program
Kaiser Permanente
Community Giving
Campaign
Merck Foundation
PG&E Corporation
Campaign for the
Community
Westamerica Bank
Community Relations
Matching Gift Program

OUTSIDE AGENCIES

AT&T United Way
Employee Giving
Campaign
The Benevity Community
Impact Fund
Center for Car Donations
United Way California
Capital Region
United Way of King County
United Way of the Bay Area

CAPITAL CAMPAIGN

Adult Day Services Staff
Shureen M. Aimar
Trisha Arnold
Barbara De Marco
Lynn Drake
Ann L. Erhardt
Lucy and David Franklin
Susan G. Heffelfinger
Veronna Ladd
Mark Maltun
Jennifer and Jason
McConnehey
Deane and Kenneth Miller
Karen and Mark Proteau
Katharina Ratliff
Celine and SuzAnne Regalia
Jackie and John Savoy
Emily D. Schmidt
Jo Skeffington-Debski
Joanne Sutro and Wayne
Cain
Laura Valencia
Eric and Leslie Vaughan
Carol T. and Robert C.
Williams
Winepark Partners 90, LLC
Victoria Wolf
Anonymous

GIFTS IN KIND

Frances and Paul Anamosa
Ardretti Winery
Angele Restaurant
Peggy and Robert Anglin
Anna's Bridal Boutique
David Arthur Vineyards
Roger F. Aylard
Ballentine Vineyards, Inc.
BarJea's Body Therapy
Robert Biale Vineyards
Bistro Don Giovanni
Black Cat Vineyard
Black Stallion Estate Winery
Bliss Wine Tours
Gina Gallo Boisset
and Jean-Charles Boisset
Bolen Family Estates
Bounty Hunter Rare Wines
& Provisions
Bourassa Vineyards
Joan and Stan Boyd
BRAND Napa Valley
Bryant Family Vineyards
Buchler Vineyards
Buena Vista Winery, Inc.
Cain Vineyard & Winery
Cakebread Cellars
Calistoga Inn Restaurant
& Brewery
Calistoga Ranch
Cardinale Estate Winery
Carneros Bistro & Wine Bar,
The Renaissance Lodge
Celani Family
Chanticleer Estate Wines
Chappellet Winery
Chardonnay Golf Club
Chase Cellars
Clif Family Winery & Farm
Cline Cellars
Clos Du Val Winery
Colgin Cellars
Compadres Rio Grille
Continuum Estate
Eileen Crane
The Culinary Institute of
America at Greystone
Martha and Emery Dameron
Del Dotto Vineyards
Diageo Chateau & Estate
Wines
Domaine Carneros
Domaine Chandon
Debra and Mark Dommen
Melisa Dooley
Duckhorn Wine Company
Kathleen A. East
and Daniel P. Dwyer

Edict Wines
Jean Edwards Cellars
Embassy Suites Napa Valley
Euclid Wines
Exertec Health & Fitness
Center
Face to Face Advanced Skin
Care Clinic
Failla Vineyards
Far Niente Winery
Field Stone Winery and
Vineyard
Five Star Productions
Robert Foley Vineyards
Footcandy
Frias Family Vineyards
Gallery 1870
Gamble Family Vineyards
Godspeed Vineyards
GolfMoose.com
The Good Life Wine
Collective
Goose & Gander Restaurant
Gordon Huether Studio
& Gallery
Grgich Hills Estate
Caddy and George Grodahl
Groth Vineyards and Winery
Harlan Estate
Reed Hearon
Hill Family Estate
Holman Cellars
Hudson Vineyards
Humanitas Wine Company
Jelly Belly Candy Company
Jones Family Vineyards
Judd's Hill Winery
Thomas Keller
Kenzo Estate Winery
La Boheme
Lagier Meredith Vineyard
Lail Vineyards
Herb Lamb Vineyards
Latitude 38 Entertainment -
BottleRock
Lonnie
Lucky Penny Productions
Deborah and Roddy
Macdonald
Markham Vineyards
Louis M. Martini Winery
Jeanne A. M. McBride
Anne and Chuck McMinn
Meadowood Napa Valley
Kathi Metro and Alan
Chinberg
Mill Valley Candleworks
Nicole and Mike Montroy
Ana Morrow Creative
Services

Mount View Hotel & Spa
Mrs. Grossman's Paper
Company
The Mustard Seed Clothing
Co.
Mustard's Grill
Napa & Sonoma Valley
Bike Tours & Rentals
Napa Golf Course
at Kennedy Park
Napa Nails
The Napa Valley Reserve
Napa Valley Wine Train,
Inc.
Napa Winery Inn
Elizabeth Y. Nickel
Diann and George Nielson
O'Brien Estate
The O'Neal School
Orchard Supply Hardware
Palmaz Vineyards
Pasta Poetry
Sue F. Payne and Ron
Edmisten
Valerie and Robert Peebles
Joseph Phelps Vineyards
Andrea and Bill Phelps
Porter Family Vineyards
Rarecat Wines
Ratna Ling Retreat Center
Redmon Wines
The Restaurant at
Meadwood
RiverPointe of Napa Valley
Robinson Family Vineyards
Rocca Family Vineyards
Rombauer Vineyards, Inc.
Saintsbury
Sazerac Company, Inc.
Patti and Jon Sevigny
Senior Helpers Caring
In-Home Companions
Sherwin Family Vineyards
Signorello Vineyards
Steve Silva Plumbing, Inc.
Kathleen and Stephen Silva
Silver Oak Cellars
Silver Trident Winery
Simraceway Performance
Driving Center
Elizabeth Spencer Wines
Spring Mountain Vineyard
The St. Regis New York
Staglin Family Vineyard
Swanson Vineyards
Elizabeth and W. Clarke
Swanson
Synergy Medical Fitness Center
Erika and Kian Tavakoli
Tierra Roja Vineyard

TOR Kenward Family Wines
Tra Vigne
Trefethen Family Vineyards
Turnbull Wine Cellars
V. Sattui Winery, Inc.
Elizabeth and Robert
Van Dyk
Vander Plaat Executive
Limousine Service
Viader Vineyards & Winery
Lisa and Victor Villegas
Julie Webster
Whetstone Wine Cellars
Wing & Barrel Ranch
Ira Yeager and George
Hellyer
ZD Wines
Zeda Computer Solutions
Anonymous (1)

LEGACY SOCIETY

Gertrudis C. Agcaoli, M.D.
Linda and Edward Barwick
Marjorie Brandon
Nancy L. Brimhall
Ulla and John Brown
James Schull and Richard
Buth
Eileen Crane
Cookie Deckter
Sioux and Terry Elledge
Linda J. Gibson
Billie Hewitt
The Dick Maher Family
Didier and Mary Ellen
Makowski
Valerie and Bob Peebles
John R. Pershing*
Dorothy and Jim Roberts
Mario Rosa
Emily Schmidt
Kathleen and Stephen Silva
Margo and John Simons
Herb Steffens*
Doris L. Stewart
Caroline Templeton
Noreen S. Thomas*
Tom and Bonny Thrower
Joan Quinlan
and Sandi Van Male
Anonymous*

BEQUESTS

Simone G. Fontaine Trust
Estate of Madeline Murray
John R. Pershing
Estate of Genevieve M.
Scharschmidt
Stanley and Ingrid Sklan
Noreen S. Thomas
Benjamin O. Whichard

In Celebration Of

WENDY BATTISTINI

Peter Edelen
DANIELLE S. BROWN

Lisa and Sean Johnston

THE CARING STAFF OF

COLLABRIA CARE

-COLLABRIA HOSPICE

Sandra and Gordon Sims

Anonymous
JANEEN FABULAE

Patrick L. Burke

THE HOLIDAY SEASON

Rose Kessel
ANGELA FONTANA-

KAUFMAN

Diana Holmes*

Jayne and Edward L.

Morrell*

CLAIRE N. FORNI

Chad Forni
ELLEN HARDENBERG

Ellen and Harry Parsley

ROBERT HARDENBERG

Ellen and Harry Parsley

RICHARD HEATHERTON

Mary B. Wills
LILLIAN HILL

Helen and Frank Olmstead

BONNIE JEAN HOPGOOD

Wendy and Scott Hopgood

CLAUDIA JOHNSON

Lynn T. Reams

BRYAN P. LILIENTHAL

Sharon Ijams
ADRIANA LOPEZ

Mary Hornberger

CRISTINA LOPEZ

Mary Hornberger

RAILALA MARISILINO

Peter Edelen

JOHN PARSLEY

Ellen and Harry Parsley

SHIRLEY PETERS

Nicole and Mike Montroy

ROBERT REYNOLDS

Rebekah Wiley-Reynolds

RUBY L. URAN

Hollie Mayberry

VICKY WOLF

Diana Holmes*

In Honor Of

TRISHA ARNOLD

Linda J. Gibson
**BV EMPLOYEES ZERO
 HARM SAFETY PROGRAM**

ELISA BEDOLLA

Mary and Terry McRae

NICOLE BENDAYAN

Sandra Hum

THE BOVEE FAMILY

Emily Cudaback

JOHN BLASINGAME

Jackie and John Savoy

WILLIAM BRIGGS

Rebecca and Lawrence

JUNE BRINSON

Sandy and Renee Brunk

WILLIAM L. BUCHANAN

Audrey M. and William L.
 Buchanan

BRENT CHRISTENSEN

Maxine A. Bardessonno

STAFF AT COLLABRIA CARE

-COLLABRIA HOSPICE

Cathrine Scholl

Maryanne Wedner

BETHANY CRAIGIE

Frank Brezel (2)

EILEEN CRANE

Linda J. Gibson

ALTHEA CUDABACK

Emily Cudaback

DIANE HERSEY AND DAVID

CUDABACK

Emily Cudaback

MARTHA DAMERON

Linda J. Gibson

JACQUELINE DE RUITER

Gerald W. Ireland

KIMBERLY DELANEY

Linda J. Gibson

MRS. GLEN B. DEWITT

Rhoda D. Mills

DEBRA DOMMEN

Linda J. Gibson

DANIEL DWYER

Linda J. Gibson

QUEEN OF THE VALLEY

Medical Center

Foundation

JANEEN FABULAE

Carolyn S. Redpath

Elizabeth M. Rogers

DONALD S. FEINER

Karen Ann Duffy Brocker

PAULA FIELDS

Harriet and Martin Spitz

JANET FLETCHER

Diane K. Knight

ANGELA FONTANA

Jayne and Edward L.

Morrell* (2)

THE GEARTY FAMILY

Dennis Redmond

BOB AND MARSHA

GEMMER

David E. Santos

JOE AND LINDA

GHISLETTA

Ines K. Ruha

WENDY HELFRICH

Judie and Dennis Arnett (5)

BILLIE A. HEWITT

Patricia Powers

JACK AND MARTHA

HUSSEY

Emily Cudaback

ELSE JENSEN

Billie A. Hewitt

CHARLES E. "CHUCK"

JONES, JR.

Kenneth and Thelma Loo

ALAN W. KENNY

Laura Letuligasenoa

JENNIFER KLUTE

Diane and Ed Parker

JONATHAN A. LOGAN

Linda J. Gibson

DEBORAH MCDONALD

Linda J. Gibson

MARK MALTUN

Linda J. Gibson

EDITH MEIKLE

Patricia Robertson

KATHI METRO

Linda J. Gibson

DEANE MILLER

Linda J. Gibson

CYNTHIA NIEZGODZKI

Carole and Daniel Kelly

THE O'DELL FAMILY

Emily Cudaback

VALERIE AND BOB

PEEBLES

June Kester

VALERIE PEEBLES

Linda J. Gibson

JESSICA PERFECTO

Dawn M. Groten, MD

DEE LEWIS H. POLSGROVE

Constance E. Polsgrove

CELINE REGALIA

Linda J. Gibson

JERRY D. RIEDL

The Riedl Foundation

KENN SANTOS

David E. Santos

JACKIE SAVOY

Linda J. Gibson

STEPHEN T. SILVA

Linda J. Gibson

JOANNE E. SUTRO

Linda J. Gibson

RAYMOND ALBERT TARAP

Susan J. and Thomas G.

Jinks

MAGGIE AND ALAN TIMMS

Joan and John Switzer

DAVE WAGNER

Elizabeth M. Reynolds

DEB AND STEVE WALLACE

Donna L. Crane

JIM WEST

Seana and Ronald

McGowan

CAROL T. WILLIAMS

Linda J. Gibson (2)

LORETTA ZWETSLOOT

Karen and Mark Proteau

In Memory of

JEAN ABATE

Barbara J. Abate (2)

LAYNE ABEEL

Barbara and Tim Hudelson

JOSEPH ABREU

Cecelia and Robert Stewart

WILLIAM BERNARD ADAMO

Barbara and Richard

Bugna

Phyllis and Joseph Consul

Mr. and Mrs. John Doyle

Jeanine C. and Jack M.

Meregalli

Cynthia and Richard

Puppione

Beverly Ann Sereda

Vineyard Valley

Homeowners Association

EDNA AGUILAR

Myra M. Strehlow

HAL AGUIRRE

Geri Aguirre

DONALD E. ALEXANDER

Karen and Thomas D.

Alexander

DAVID AND CONNIE

ALLEN

Arlene and Cliff Travis

LEWIS R. ALLEN

Delores P. Bailey

Charlotte and Lee

Chesnutt

Mary and Clemente Cittoni

Nina and Donald Cutler

Eleanor and Rex

Kimbrough

Marlene and Edward Lenz

MARY ROSE ALLEN

Donna and Roy Hockney

Jerome Johnson

ILDA MELO AMARAL

Maryjo and Manuel

Amaral

CLYDE ANDERSON

Anavon Anderson

DON "BUBBA" ANDRADE

Toni L. Stuart (2)

CARNATION "CONNIE"

ANDREW

Kathy L. Merritt

MARCIA S. ANDREWS

Kim Malley

GRANDMA ANNA

Jackie Stone

MARTIN ANZELC

Joyce Anzelc

DOROTHY APPOLD

Greg A. Peterschmidt

RICK J. ARATA

Dorothy Arata

AMY ARIMOTO

Linda Ozores

ROGER LOUIS ASBILL

Darlene and Roger Asbill (2)

BETTY ASHLOCK

Carol and Burton Pontynen

Puppione

JAMES R. ASKINS

Peggy Frost

ANN ASLAN

Harriet E. and Frank C.

Sommer

HAROLD AND MARIE

ASPERGEN

Donna L. Crane

LOUIE AND HELEN AVELAR

Arlene and Cliff Travis

VALDEAN N. AYLARD

Patsy A. Abbott

Roger F. Aylard (2)

JOHN L. AZEVEDO

Catherine Azevedo

Diane M. Elizondo

Dorothy and Ron

Fagundes

Kathleen A. Fleming

Elinor Mummaw

Lauren and John K.

Rupnik

MARY ANN BABCOCK

Steven Rosa

VICTOR BACIARINI

Ralph Lippert

JOHN E. BAILEY

Delores P. Bailey

LOYCE L. BAKKER

Anonymous

ROBERT M. BAKKER

Anonymous

FRANCES BALICH

Victoria P. Balich

ELLEN G. AND JOHN

BALLENTINE

Betty P. and W. V. Ballentine

GRACE AND PENO

BANDUCCI

Marie Banducci (2)

Erika and Kian Tavakoli (2)

LORETTA BARACOSA

Vernon A. Baeta

Julie and Dominic Baracos

V. L. and Robert Brazil

Robert J. Jake*

Annemarie and Robert

Lando

MAXINE AND FRANK

BARBERIS

Stacey and Raymond Edds

Tracey L. Schmidt

PETER J. BARDESSONO

Maxine A. Bardessonno

Stephen J. Bardessonno

HELEN M. BARLOGGI

Mary and Clemente Cittoni

GLORIA BARTH

Michelle and Rands Jeffers

Randy and Kim Jeffery

Paula B. Mills

Barbara and James

O'Shaughnessy

HOPE BARTLETT

Carol and Burton Pontynen

HENRY "HANK"

BARTOLUCCI

Maxine A. Bardessonno

DOROTHY BARWICK

Linda and Edward Barwick

JANE W. BASINGER

Claudia and Richard

Guzman (2)

DOROTHY GAIL

BEADLESTON

Joyce and Larry Ellis

Kim M. and Joseph F.

Moore

NANCY MORRIS BEARD

GRACE BROTEN
Maxine A. Bardesson

PATRICIA BROWN
Connie M. Brown

WILLIAM C. BROWN, M.D.
Lisa and Sean Johnston

WILLIAM G. BROWN
Lila L. Kiddy

CARLA BUCKLEY
Elizabeth J. Martini

HAROLD BUMP, JR.
Joanne M. Bump

DELIA BUNNELL
Ruby and Robert
Townsend

JACKLYN BURCHILL
Patsy and John Finnigan

GEORGE F. BURGER
Evelyn Burger

ELSIE BURKE
Anonymous (2)

RICHARD JAY BURNLEY
Peggy and George Burnley
Brooke Denniston
Kendel Orr
Christine Parvin
Tracy L. Peller
Karen Sheldon
Ilaina Spinelli
Rosemarie Vertullo

FRANCES BURNS
Ashley Wright

UNCLE BOB BURTZLAFF
Nicole and Mike Montroy

ELLA FRIEDA BUTH
James Schull
and Richard Buth

EVELYN CABRAL
Nicole Biederman

MANUEL P. CABRAL
Marjorie A. Cabral

MARIAN CADELLE
Sherlyn and Dave Zumwalt

MATTHEW CAIN
Walter Knoepfel
Celine and SuzAnne
Regalia
Joanne Sutro
and Wayne Cain (2)

ANN CAIOCCA
Juliann C. Fontana

**ANNETTE KRAMM
CAIOCCA**
Juliann C. Fontana

VIRGLIO CAM
James Schull
and Richard Buth

VIRGINIA CAMOU
Edmond C. Camou

RAY WILEY CANNON
Jo Cannon

**MARY AND DOMENIC
CARAFA**
Marie and Spiro
Dalagorgas

MARY CARAFA
Marie and Spiro
Dalagorgas

KENNETH F. CARDEN
Sandra K. Carden
E. Jean and Danny Miller

DAVID CAREY
Lydia Crowell

**LOUIS AND LENA
CARLENZOLI**
Stacey and Raymond Edds
Tracey L. Schmidt

RICHARD A. CARLSON
Dorothy I. Minns

JOBYNÁ CARPENTER
Dorothy M. Wurz

**LEWIS GIBBS CARPENTER,
M.D.**
Elfy Carpenter

PATRICK CARR
Sherlyn and Dave Zumwalt

RICHARD A. CARROLL
Evelyn O. Carroll

LYNDA MARY CARSON
Lois Decius
Linda D. Doshier
Barbara and Timothy
Mooney
Jayne and Edward L.
Morrell*

Rebecca and Tom
Mumford
Paula and Bill Powar
Marilyn Reid
Viola and William Schick
Gail and David Smiley
Joyce and Francis Spinelli
Barbara Stutz
Deanna Wargowski
Melanie and Leonard
Waterson

GLENN CARTER
Betty J. Carter

EDWIN CATES
Sally L. Seeler

**EDWIN AND KATHRYN
CATES**
Sally L. Seeler

KRISTEN N. CASEY
Denise Flaherty

**MARIA ELIA CASTILLO DE
ESCOBEDO**
Nancy and James Henry

MARIA CAVALIERI
Marcella Matack

EDWARD CEBALLOS
Nancy and John Bonsall
Suzanne Ceballos
Alicia Malerbi
Eleanor and Angelo Pardini
Carol A. and Robert
Riordan

ANNA CERRETA
Kenneth V. Cerreta

LETHA CHAPMAN
Paula and Craig Libby

FRED CHASE
Susan J. and Thomas G. Jinks

ROY CHAVEZ
Emily Simone

CLARK E. CHEFF
Mary and Kevin Donohoe

FRANCES M. CHIARELLA
Peter Chiarella (2)

CHUCK CHINBERG
Kathi Metro
and Alan Chinberg (2)

**LEE GEORGE "MIKE"
CHOUINARD**
Francine and Michael
Chouinard
Hollis and Ronald
Critchley
Diana and Gary Egkan
Susan and Jeff Grant
Martha and Jack Hussey
Patricia J. Jones

LITA CHOW
Joanne Sutro
and Wayne Cain

**CHRIS AND BETTY
CHRESTENSEN**
Susan Buda-Chrestensen
and Cal Chrestensen

BRENT CHRISTENSEN
Stephen M. Bardesson
Marjorie E. Bowers
Norma and Herman
Christensen (3)
Eleanor and Francis Ford
Coppola
Charlotte and Joseph
Gaspari
Annette and Peter Knight
Cynthia and Margis
Malisaukas
Dulcie Moore
Lisa and Williams Neil
Peg and Larry Pelter
Sandra and Jack Pepper
Allison Tait

**MARJORIE CLAIRE
CHRISTENSEN**
Shirley Azevedo
Arlene and Louis Bates
Tere and Mark Charney
Lisa Christensen
Paula Fuller
Marilyn F. Ward
Judith and Craig Wolcott
Elke and Matthew Wood
Anonymous

DELORES A. CHURCH
Sandra and Donald
Church

FLORENCE C. CLAES
David Abreu Vineyard
Management, Inc.
Sandy and Brian Claes
Norma and Calvin Claes
Jeffrey S. Claes
Carol Custer
Terrie and Dave
Hawkinson
Mr. and Mrs. Michael
Henley
Elaine and Robert
Lawrence

HUGH CLARKE
Annette M. and Laryl I.
Smith

ANDRE CLERCI
Diane L. Risley

ANDREA CLERICI
Louise Clerici

ELAINE M. CLERICI
Petronella and Louis
Ferrario (2)

DOROTHY CLEVELAND
Candy Cleveland

ROBERT "RAY" CLEVELAND
Joyce M. Conley

**LORAIN ACQUISTAPACE
CLINE**
Alice Galleron

CHARLES A. CLOSE
Gayle Close (2)
Billie and Marshall Jaeger

JACK COATES
Sandra A. Tallerico

PETER COLEMAN
JoAline and David Olson

ADA COLSON
Billie A. Hewitt
Napa Valley Porcelain
Painters Club

DONNA REID CONNELL
Zee Foundation

LEWIS E. COOK
Patricia M. Cook (2)

CAROL MOREL COURVILLE
Lynn Cangemi
Sharon K. and Dennis W.
Harter

ROBERT "BOB" COVEY
Hollis and Ronald
Critchley

**WALTER H. "CURLY"
CRADDOCK**
Naomi M. Burney

ELIZABETH ANN CRAFT
Colleen Roberts

VELMA CRAIG
Barbara and Robert
Chavez

GEORGE W. CRANE, JR.
Donna L. Crane

WILLIAM CRANE
ACME Fill Corporation

MARCIA M. CRONIN
Janet Cannizzaro

SAMUEL E. CRUNKLETON
Bruna M. Crunkleton*

LUCY CLARK CUMMINGS
Celia G. Cummings

BETTY L. CUNNINGHAM
Robert S. Cunningham,
Jr. (2)

SHIRLEY CUNNINGHAM
Ann Granger

**ROBERT S. CUNNINGHAM,
III**
Robert S. Cunningham, Jr.

EUZEBIO ANTONIO CURA
Shirley and Raymond
Massaro

EVELYN DARLENE CURRY
Geraldine and Bud Bair
Alethea J. Brinson
Lillian and Harold Holland
Clara B. Rodrigues

GLORIA CURRY
Denise A. Loughran

WALDO CUTLER
Elsie M. Ross
Inara and John Steinbruner

REBECCA "BECKY" DALLAS
Carol V. Kirk

THOMAS DALY
Sally and Ralph Hunter

HELEN DARLING
Dawn and Robert Horton

**ROY L. AND RUTH
DARNELL**
Shirley K. Allen

ANTONIA "TONI" DAVIS
Anonymous (4)

TESSA DAVIS
Joan and Raymond
Kranich

GWENDOLYN DAVISON
Jean Marino

ARTHUR J. DEAN
Gloria Dean

LELAND H. DECKER
Ramona J. Decker

PATRICIA DEITCH
Phyllis L. Brace
Linda and Paul Moyer
Lynette and Oscar Stout

MARIE DEL BONDIO
David Abreu Vineyard
Management, Inc. (2)
Janice M. Abreu
Norma Beltrami
Mary and Clemente Cittoni
Cara and Tom Davies
Darcy and Les Dunlap
Sharon E. Evensen
Napa Wine Company
Jean Rego
Annette M. and Laryl I.
Smith
Nina and Valen Threadgall

MARY DELOUGHARY
Dawn Wright

MARY DEMING
Deltalee Gates

**BARBARA DENNIS AND
SON MICHAEL DENNIS**
Linda I. Methven

**HILTON HENRY DES
ROCHES**
Alice Faye des Roches

HOWARD G. DICKENSON
Marilyn and Ren Harris

RODNEY DINGMAN
Virginia and Edward Butler
Denise A. Del Carlo
Audrey M. P. del Mas

DAVID DIXON
Arlene M. Dixon

**FREDA MARGARET
DOERING**
Mary J. Rupp

WILLIAM T. DOERING
Mary J. Rupp

JESSE ALBERT DOOLEY
Robert Dooley
Virginia C. Dooley
Frieda D. Turner

**THOMAS ROBERT
DOONAN**
Rose O'Leary

ROBERT DOTY
Helen Megan

THOMAS DOUGHERTY
Nancy Dodson

GENE B. DRAKE
Aegis of Napa

PAUL AND MARY DRAKE
Rebecca and Lawrence
Drake (2)

**DREYER AND BAILEY
FAMILIES**
Linda and Larry Dreyer

GEORGE L. DULINSKY
Anne J. Thompson

THE DULLE FAMILY
Dorothy J. Dulle

JACK P. DUNCAN
Vera I. Duncan (3)
John F. Methven, Jr.
Linda I. Methven

JANET J. DUNLAP
John F. Dunlap

CYNTHIA MILDA DYER
Bridget and James
Madruaga

YVONNE MARIE EASTMAN
Marie J. Burris

JOSEPHINE EDANO
Mary L. Edano (2)

LOUIS EDANO
Mary L. Edano (2)

**MARTHA AND RAYMOND
EDDS**
Stacey and Raymond Edds

SUSAN PARKER EDELEN
Peter Edelen
Halene Storer

KAY A. EDWARDS
Sue Ziernski

JANE W. EGAN
Frances and Paul Anamosa

GERTRUDE EISAN
Marlene Eisan
Louise Menegon
Melody and Gary M.
Morisoli

MELVIN "PAPPY" EISAN
Marlene Eisan
Melody and Gary M. Morisoli

MELVIN ELICKER, JR.
Louetta and James Langley

BERTHA L. ELIOT
Anita and Herbert Ford

MARION F. ELLIS
John Comisky

KURT ENGBRITSON
Anonymous

LYNN ENGER
Ronald M. Enger (2)

NANCY ENGLEMAN
Mary E. Jones
Dorothy and David McCallum

**PATRICIA LAFRANCHI
EROTOLA**
Tere and Mark Charney (2)

**DELIA ELENA ESVIZA DE
VIADER**
Delia Viader

**LEODEGARIA M.
EVANGELISTA**
Rita M. Prey

GLORIA MAXINE EVANS
Mary and Don Evans

JAMES EDGAR EVANS
Michelle A. Smyth (2)

RICHARD EVENSEN
Sharon E. Evensen

DENISE HOPPE FARIA
Alice A. Rhea
Beverly and Tom Rinaldi
St. Helena High School
Staff

REENE FARNEY
Carolyn P. Hamilton

JEAN FASI
David Abreu Vineyard
Management, Inc.

DONALD S. FEINER
Sue and Roy Barush
Susan D. Clark
Marsha L. Ewig
Preston Greene
Sharon Kay

- Betty and Robert La Vine
Sonya and Harold Milton
Sandra Pena
Eliot Reiner
Susan and Guy Sandler
Joan and Clifford Simpkins
Charlene and Alan Steen
Rebecca and Ronald Stradiotto
Marlene T. Zimmerman
LENA FERRANDO
Carol and Larry Dooley
Fannie and Bruno Pardini
WILLIAM E. FINNEGAN
Denise and William Coffield
Captain Kenneth Graham
Maxine A. Maas
Napa Valley Marina
Napa Valley Yacht Club
BARBARA FINNEY
Katrina Meier
MILTON FINNEY
Katrina Meier
DALE H. FISHER
Doral J. Fisher (2)
GARY FISHER
Sherlyn and Dave Zumwalt
JEFF FISHER
Kendall and Lee Hillman
JANE AND JIM FLAHERTY
Denise Flaherty
AUDREY D. "BOOTS" FLETCHER
Lucretia and Rex Sawyer
DENNIS FLOCK
Nina and Valen Threadgall
STANLEY R. FLORES
Jo Ann Myers
WALTER "JIM" FOGARTY, JR
Sue M. Fogarty (2)
THERESA LORETTA LANDI FORMOSA
Claudia and Daniel Cahill
Bernice F. Sousa-Carden
and Bill W. Carden (2)
Gerri and Vincent Chisholm
Marsha Condon
Christine and Daniel Cronin
Elaine Faflek
Mary and Anthony Formosa
Vicki and Joseph Formosa
Evelyn M. Guiral
Nadine Gustafson
June and Giro Landi
Helene and Timothy Lavelle
Bess and Vincent Nuzzo
Barbara and William Reyn
Ruth M. Schubert
Andrew Vireno
Mary Weese
BETTY FORTE
Judy and Don Crow
EVELYN B. FRANK
Susan and Paul Frank
JEANNE FREDIANI
Jeanne M. Croxdale
FLORENCE FREED
Connie Freed
JOHN "JACK" FREITAS
Shirley M. Glashoff
JEFFREY FREY
Harriet E. and Frank C. Sommer
MORGAN AMADA FRITZLEN
Bonny and Tom Thrower (2)
ELEANOR KENNEALY FUERST
Ella K. Gates*
Frances B. Roberts
BARBARA GAFFEY
Anne and Patrick Gaffey
- MOSE GALANTE**
Barbara Galante
MARCELLA GALLAGHER
Norma Beltrami
Beverly A. Borges
Anita and Henry Ghiringhelli
Paradigm Winery
Seana and Ronald McGowan
Constance E. Polsgrove
VIRGIL GALLERON
Alice Galleron
VON JAMES GALLION
Stephen Gallion
WILLIAM ROMERO GARIBALDI
Mary and Clemente Cittoni
Rose and Kurt Eid
Gloria I. Garibaldi
William R. Garibaldi*
Shirley M. Glashoff
ELLA K. GATES
Aegis of Napa
Soyako K. Smithson
HAROLD N. GATES, M.D.
Deltalee Gates
BERNICE GEARY
Ann M. Schwartz
GLORIA GERHARDT
Gary Gerhardt
TIM GERHARDT
Brenda and David Anderson
ALBINO J. GHENO
Melanie Gheno (2)
AURORA GHIORZI
Antoninette and Lorenzo Bavoso
Kay and John De Martini
ALVIN GHIRINGHELLI
Beverly Jents
Diane and Don Lawley Jonas
Michael A. Le Brun, Jr.*
JOHN MICHAEL GHIRINGHELLI
Helen G. Nelson
LOUIS GIAQUINTO
Marguerite A. Giaquinto
GRETCHEN GILYON
Katherine and Michael Quast
MELVIN M. GOAR
Sheila and Scott Ticen
DEAN O. GOFF
Sharon J. Goff
FAYE GONSALVES
William Gonsalves
Clara B. Rodrigues
ANA MARIA GONZALEZ HAMMAKER
Melanie and David Hammaker
Beth Kafka
DOROTHY GOULD
Frieda Clayton
MAXINE GOULD
Frieda Clayton
EUGENE GRAFF
Carol Graff
CORA GRASSMANN
Thelma E. Hermes
SHARON GRAVES
Shirley and Paul Dean
Oleta McGrath
Jeanine C. and Jack M. Meragalli
Frank G Scanlon
Vineyard Valley
GERALD H. GRAY
Celia G. Cummings
PATRICIA CLARK GRAY
Celia G. Cummings
HERBERT E. GRAYWOOD
Joan M. Graywood
JENNIFER GREEN
Margaret C. Hager
- JUDITH ANN GREEN-TOWEY**
Valerie and Thomas Murphy
Nancy and Melvin Oweyong
MARY ANN GREERTS
Francine and Michael Chouinard
CHARLES "CHARLEY" FRANK GREGORY
Brian E. Crawford
MY PARENTS, NIKOLA AND IVA GRGIC, DESNE, CROATIA
Mijenko "Mike" Grgic
EMMETT G. GRIFFIN
Delores P. Bailey
RONALD V. GRIFFITHS
Sylvia P. Griffiths
MARISSA GUINN
Ann and Michael Simmons
DOROTHY M. GULBRANSEN
Anita Webb
ROBERT W. GULBRANSEN
Trish and John Lyon
ROBERT J. GUSTAFSON
Anonymous
Wallace Wortman
MARGARET GUYDER
Lorraine E. Hood
GERTRUDE HAAS
Mary Anne and Joseph Dorchuck
CLAUS K. HAASE
Ursula Haase
DOROTHY HAGEMAN
Mary Rowan
BART HAGER
Margaret C. Hager
CHARLIE HAIGHT
Debra and Ray Solarez
JESSIE HAIRSTON
Sandy Houck
RICHARD M. HAIRSTON
Sandy Houck
RENA HALE
Marilyn and Ren Harris
GRANDPA AND GRANDMA HALEY
Eileen Burtzloff
JOHN AND JEAN HALL
Sandra J. Bollinger
MARIAN HALL
Becky Erba
Mary Plimpton
Elfrieda E. Robinson
FERNANDA RITA HALLORAN
Harold R. Halloran
BERTHA MARIE HAMMOND
Patricia and David Pitta
ROBERT HANDEL
Barbara J. McDonnell
MARGARET HANLY
Linda and Rick Thomas
ORVILLE D. HANNERS
Mary C. Hanners
CAROLINE M. HANSEN
Wendy and Joseph Beltrami
Susan A. and James M. Coy
Ethel N. Dederling
Rosemarie and Edgar Gardner
Donald L. Hansen (3)
Patricia and Fred John
Betty and Donald Kitchen
Marilyn Korth
Mary Lynly
Wendy and Michael Scott
Judy Thomas
Judith and Paul Thomsen
Donna and Robert Winchell
Marlene and Raymond Wood (2)
- EMILIE HANSEN**
Holly Hansen
and James Masi (2)
LORRAINE HANSEN
Kim Malley (2)
ROBERT HARDENBERG
Ellen Hardenberg*
Ellen and Harry Parsley
NANCY HARDING
Anne J. Thompson
MELBA HARMOND
Linda and Larry Dreyer
CLAUDE W. HARRIS
Jo Ann Myers
HARRIET A. HARRIS
Amy and Michael Long
DOLORES HARRIS
Marilyn and Ren Harris
REN HARRIS, JR.
Marilyn and Ren Harris (2)
REN AND DOLORES HARRIS
Marilyn and Ren Harris
Sherlyn and Dave Zumwalt
EDWARD "BILL" W. HARTLEY
Beverly J. Hartley
Gary L. McClellin (2)
SHIRLEY I. HARTLEY
Patricia and Carl Botenhagen
STEPHEN HARTMAN
Augustine A. L. Ruygers
LINDA HASELTINE
Anonymous (2)
GISELA HASKIN
Alicia and Don Estes
GERTRUD HASS
Mary Anne and Joseph Dorchuck
JEANNE HATHAWAY
Annie and Frank S. Emmolo
KATHRYN J. HAVENS
Michael K. Havens
GAIL HAYNE
Margery J. Smith
JANET HEATH
Sherlyn and Dave Zumwalt
LINDEN HEATH
Sherlyn and Dave Zumwalt
RODGER ODIN HEGGELUND
Napa Valley Yacht Club
GEORGE HEIBEL
Helen G. Nelson
RUTH HEIBEL
Helen G. Nelson
FRANK A. HEID, JR.
Jeanne E. Heid
Lois V. Keenan
Robert J. Thompson
DONNA M. HEINE
Billie A. Hewitt
INGE B. HEINEMANN
Kathryn Dobie
DENNIS L. HEINKE
Linda and Joseph R. Ghisletta
GEORGE HEIBEL
Helen G. Nelson
RUTH HEIBEL
Helen G. Nelson
DONNA HELLER
Mel Tearle
JIM HENCH
Margaret and David Barson
SUE HENNESSEY
Joseph F. Hennessey (2)
MARGARET HERALD
Beverly and Glenn Bennett
LUIZ HERNANDEZ
Evangelina Hernandez
RICHARD P. HESS
Jill McFarlen
LILLIE AND GEORGE HICKEY
Christine Wheelan
- LEE HILL**
Billie C. Hill
LILLIAN HILL
Evelyn L. Hill
NELLIE AND DELL HILL
Anonymous
LOH HITCHINER
Pearl and William Nystrom
MARGARET HOFFMAN
Victoria and Pete Eschelbach
JOSEPH HOLBROOK
Russell Brown
WANDA HOLBROOK
Napa Valley Marina
ETHEL HOOK
Ellen and Don Wulf
WILLIAM HOOK
Ellen and Don Wulf
JIM HORNBERGER
Robert and Phyllis Beatie
ROBERT HORNBERGER
Mary Hornberger
LUELLA A. HORNE
James R. Horne
JO ANN HORTON
Don Horton
ROBERT HOUCK
Sandy Houck
HELEN HOUCK
Sandy Houck
FLORENCE D. HOWARD
Rhoda D. Mills (2)
JAMES E. HOWELL
Deborah and Richard Downing
Donald Hudson
Donald M. Yarger (2)
JANE HUM
Sandra Hum
JEANNE EVELYN HUNT
California Grower Foundation
Lynn Cangemi
Annie and Frank S. Emmolo
Robin Hunt
JUDY HUNT
Aegis of Napa
ORVEY HUNTER
Barbara De Marco (3)
CARL HUNTSMAN
Olga and Ben Ferro
MARIAN HUNTSMAN
Olga and Ben Ferro
JEAN IJAMS
Christine and Bryan Lilienthal
EDGAR "ED" J. ILSLEY
Sandra Ilsley
IONA INGERSOLL
Billie C. Hill
ELIJAH JACKSON
Rianne and Vincent J. Pasquariello
ROBERT J. JAKE, MD
Betty Jake
DARLENE G. JAMES
David James
DARLENE AND RICHARD H. JAMES
David James
GIL JAMISON
Sherlyn and Dave Zumwalt
ALMA JANES
Joan and Keith Pieper
BERNARD JANKIEWICZ
Judy Jankiewicz (3)
EDWARD ALFRED JEANNOTTE
Claudia Jeannotte
DONALD JENSEN
Donald M. Yarger
JOYCE JENSEN
Lillian M. Jensen
MARGY JENSVOLD
Judith J. Thomas
JOSEPH JETTE
Frances and Richard Maycock

BETTY JOHNSON
Donna M. Sims

DORIS JOHNSON
Vineyard Valley

OTA JOHNSON
Linda and Paul Moyer

ROBERT JOHNSON
Elizabeth Buckley

ROBIN JOHNSON
Corky Johnson
Bonny and Tom
Thrower

RUSS JOHNSON
Maxine A. Bardessonno

VIRGINIA JOHNSON
Winepark Partners 90,
LLC

CHARLES E. "CHUCK" JONES, JR.
Elizabeth A. Henderson
Mary E. Jones (2)
Jill and Philip Lambert
Dorothy and David
McCallum
Wanda Miller
Barbara and James Wilson

CHARLES W. JONES
Dorothy Doscher

HUGH JONES, JR.
Valerie J. Jones

PATT JONES
Greta J. Valerga

GRACE BILLIE JORDAN
Aegis of Napa
Delma and Robert Butler
Diana M. Gunther
Patricia and Don Krenke
Arlene and David Young

JAMES H. JORDAN
Arlene and David Young

LEONARD CHARLES JUCHAU
Jane A. Carpignano

HANK AND JOAN JUDNICK
Denise A. Loughran

HANK JUDNICK
Denise A. Loughran

JOAN JUDNICK
Denise A. Loughran

HOWARD KAHN
Alice Rosenzweig

JEANNE KAMINSKI-ALOJADO
California Grower
Foundation

MORRIS AND MARY KANTZ
Kent W. Kantz (3)

STEPHEN KASTNER
Gaylon and William
Kastner
E. Jean and Danny Miller

MARV KEEVER
Olga and Bill Keever

NEL KEEVER
Olga and Bill Keever

MERT KELLEHER
Barbara Kelleher

BAILEY KELLER
Annette and Dennis Keller

KURT KELLER
Annette and Dennis Keller

DONNA R. KELLEY, LSW
Greg L. Marvin

ANNE KELLOGG
Margaret and David
Barson

CHARLES KELLOGG
Margaret and David Barson

ALAN WARREN KENNY
Kathleen Clark and Larry
Rushing
Tiffany Kenny
Thelma and Henry Wessell

RONALD G. KIEHL
Mary L. Kiehl (2)

VERNA F. KING
Joel P. King

RHEA W. KINGSLEY
Joanne T. Johnstone

Judy and Larry Parady
Elizabeth M. Reynolds
Linda Reynolds

ALICE KIRSTEIN
Konnie and Bruce Peters

BENJAMIN KIRSTEIN
Konnie and Bruce Peters

TERRIE KLEIN
Anonymous

CATHERINE "CATHY" KNITTEL
Karen Evans
Howard Gorbach
Michael Laviano (2)
Lana McKinney
Jean Moore
Dean Thompson

JAMES F. KOLB
Opportunity Fund,
Napa Valley Community
Foundation

ERIC NEIL KOMPLIN
Jacquelyn F. Komplin (2)

ROBERT KOWALKOWSKI
Nancy and Jeffrey Cooke
Jeanie and Greg Fidler
Bethel M. Kowalkowski (2)

CHARLES D. KRISTICK
Aegis of Napa
Peggy V. Watkins
Janice and James Tidgewell (2)

DORRIS W. KRISTICK
Aegis of Napa
Janice and James Tidgewell (2)
Peggy V. Watkins (2)

HOWARD G. LA RUE
Barbara A. and Doyce G.
Sneed

LOIS B. LADLEY
Ruth Andersen
Carol and Joseph Ward

HERB LAMB
Betty P. and W. V.
Ballentine
Connie and James P.
Caven
Paul Goodof
Cate Menon
Wineshipping

JOHN LANGFORD
Mary B. Wills

INGE LANGHAM
Barbara and Peter
Langham

BILLY GENE LANGHOFER
Charlotte Johnson-
Langhofer

JOYCE EVANS LA PIERRE
Gayle Close

MARY LAUGHTON
Gail V. Rando

JOHN I. LEGE
Jo and George Lavin
Margaret Skivington

DAN LENTZ
Jeanne and Andrew Szmidt

DONALD E. LEONARD
Eleanor H. Leonard

LYNN WALTER LIEBIG
Anonymous

CAROL ANNE LIES
James E. Lies, MD

WARREN AND RUTH LINCOLN
Karen and Harry
Millhouse (2)

NORMAN AND MARILYN LINDBERG
Sherri and Jeffrey A.
Linden

VERA LISI
Beth and Brian Dunn (2)

CLIFF I. LITTLE
Carol Graff

DALE LOCHEL
Martha Raya Lochel
Kaaren Stasko

RACHEL LEOW
Ruthmary and Benjamin
Parmeter

RICHARD L. LONERGAN
Pat A. Conti
Billie and Marshall Jaeger
Stephanie and Daniel Lonergan

DONNA LONG
Rebecca and Ronald
Stradiotto

LOUISE LONG
Cindy and Dick Long

BARBARA LOSETH
The Thornberry Family

SELMA LOTZ
Franz Lotz
Anonymous

MICHAEL J. LOUGHRAN
Denise A. Loughran

MARY LOWRY
Janet E. Jonas and Michael
S. Bezvoda

JOAN LUECK
Carol Dick

IRENE L. LUNDY
Nancy Sullivan
Elizabeth and James Trood

SHIRLEY AND LARRY AND TIGER LYONS
Danny R. Lyons
Arthur MacDonald
Dianne G. and Bob U.
Snyder

ALICE MACHESKY
Patricia A. Peterson

ETHEL "EFFIE" MACHOLZ
Ted Vanasupa

RICHARD D. MAIER
J. Arlene and Leland E.
Mitchell

ROSEMARY JANE MAILHOT
Marianne M. Accornero
Automic
Todd De Laughter
Christopher Vercelli

OSCAR "CHA CHA" MALIK
Erika and Kian Tavakoli

DON MARINO
Anita and Victor Bergevin
Sandra J. Bollinger
Bertha and Robert Bunjus
Mary and Clemente Cittoni
Betsy and Gemy D'Adamo
Lorraine Negri

EVELYN MARKT
Lorraine and Robert Yates

JEAN NOREEN MARTIGNONI
Justo Perez
Jane A. Carpignano

JOHN R. "BOB" MARTIN
Tina and Richard Johnson

GERRY R. MASEL
Stayman Estates, LLC

"MOM" POLLY MASTEJ
Eileen Burtzlaff
Nicole and Mike Montroy

ALBERT MATAACK
Marcella Mataack

STANLEY MATTOON
Tomda Fund at Schwab
Charitable

MAXINE MCCABE
Marilyn McCoul (2)

DAVID R. MCCALL
Pat McCall

HAP MCCALLUM
Dorothy and David
McCallum

WALTER MCCALLUM
Dorothy and David
McCallum

SANDRA MCCLAIN
Christine Wheelan

GEORGE F. MCCOUL
Marilyn McCoul

MR. AND MRS. EDWARD L. MCCOY
Mary and Charles Hall

CHRISTINE MCCULLOUGH
Robert C. McCullough

GLORIA MCCURDY
Laura and Ryan Gregory

WILLIAM N. MCGOWAN
Joyce Hing McGowan

CHUCK MCGRATH
Cara and Tom Davies

HERB MCGREW
Anonymous (2)
Susan and Guy Sandler

GEORGE MCKEE
Claudia Z. Davis

BARBARA MCPHERSON
Lorraine and Robert Yates

ROSE L. MEAGHER
Joanne and Al Patchett
Robert E. Richardson

ELWOOD J. MEE
Evelyn M. and C. M. Van
Rijn (2)

ERIKA M. MEE
Evelyn M. and C. M. Van
Rijn (2)

ROGER C. MEE
Else M. Mee
Janice M. Meinel
Loretta P. Branciforte

IDA NEMES MELLOW
Kathryn and Dean
Balough

JOHN AND AMELIA MENDES
Clara B. Rodrigues

VERINO "VE" MENEGON
Louise Menegon

PETER ALBERT MERIANO
Josephine Bertolucci
Joanne B. and Kyle Kelley
Cindy Kodokawa
Gail Overhouse

PETE MESA
Opportunity Fund, Napa
Valley Community
Foundation

GRACE T. METHVEN
John F. Methven, Jr.
Linda I. Methven

VIOLET METRO
Kathi Metro and Alan
Chinberg

ELEANOR "ELLIE" LORRAINE BICKOFF MEYER
Sharyn A. Meyer-Fuller

WESLEY NORMAN MEYER
Sharyn A. Meyer-Fuller

EMIL MEYERS, JR.
Emil Meyers

MARTHA MEYERS
Beverly J. Hartley
Emil Meyers

ALICE AND STANLEY MICKELSON
Robert and Connie Stanley (3)

BARBARA ANN MILLEGAN
Kathleen Ahrens

ANDIS MILLER
Andrea and Mark Miller

ANN E. MILLER
Susan and Paul Frank

DONALD MILLER
Aegis of Napa

JENNY MILLER
Joseph N. Silva

JEANNE MILLER
Kendall and Lee Hillman

SIDNEY MILLER
Susan and Paul Frank

MURLE "PETE" MILLER
Linda G. Miller (2)

GEORGE T. MINNS
Dorothy I. Minns

JOHN P. MISCHKOT
Marcella Mataack

OLIVE MISCHKOT
Marcella Mataack

FLORDNETTE MITCHELL
Celine and SuzAnne
Regalia

HAROLD MITCHELL
Virginia and Bob Mitchell

SYLVIA MITCHELL
Donna and Dave Haley

JOAN OSGOOD MOEHRKE
Howard Moehrke
Arlene and Cliff Travis

MOHAMMAD ALI "NADER" "MIKE" MOKALLA
Giti Mokalla

FRANK MARIO MOLINARI
Ann Molinari (2)

CAROL MOIZE
Richard Reilly

CAMILLE AND LARRY MONGELLI
Rita and Robert Werden

VITO G. MONTELLI
Marjorie A. Cabral

JUNE AND NORMAN MOORE
Carolyn O. and Rufus P.
Cushman, III (2)

DOROTHY JOHNSON MOORHOUSE
Barbara J. Leverette
Marilyn D. White
Margery J. Smith

CAROL MORAL
Aegis of Napa

JOHN MORENO
Dorothy I. Minns
Catherine Moreno

CHULA J. MORI
Michael D. Kazar

DAVID MOTTA
Suzanne Stamper

NANCY K. MOUNTER
Paula Belden
Linda and Larry Dreyer (3)
James H. Mounter
Napa Valley Model A Club
Samuel Schull

HELEN MURPHY
Paula Sherwood-Fuller

MABLE MIRN MURPHY
David P. Murphy (2)

CATHERINE A. MUTH
Gilbert Muth*
Johanna Muth and Harris S.
Nussbaum

ROBERT EUGENE MYERS
Jo Ann Myers

EIKO NAKAMURA
Ruth and Mike Price

ELSIE NAKAMURA
Donna and Robert
Winchell

SARAH NAUMANN
Matthew T. Naumann

ERNIE J. NAVONE
Cara and Tom Davies

LOUISE NAVONE
Cara and Tom Davies

FRED NEGRI
Lorraine Negri

ROBERT L. NEIL, M.D.
Norma J. Neil

PRISCILLA NELMS
Marie and William
Bresciani
George P. Nelms

KAREN NELSEN
Elaine Nelsen

AMY NELSON
Napa Valley Mobile Home
Park "Fun Club"

ARNOLD L. NELSON
Betty A. Nelson

ERIKA NEUMANN
Monika and Eberhard
Neumann

LOUISE ANN NEWSOME
Jean Rego
Judith and Craig Wolcott

GIL NICKEL
Mary and Roy Ferguson

JOSEPH A. NICKERSON
Mary and Clemente Cittoni

PAUL LEROY NIEHAUS
Ingrid Niehaus and Roger Neiley (2)
Jeannine and JC Niehaus

JIMMY NORTON
Sandra Callahan

ELDEANA NUEST
Sarah D. Gianelli

VICTORIA NUGENT
JoAnn and John Dunn
Janice and Larry Hayes
Patricia A. and James J. Schwartz
Kathi V. Sjøtvedt

HENRY L. OLHAVA
The Benevity Community Impact Fund

JEANNE OLIVER
Aegis of Napa

RONALD O'NEILL
Beatrice H. Eyler

DUANE J. ONOMIYA
Connce Brannigan

DIANE OPPERMAN
Lorraine and Robert Yates

DANIEL "DANNY" ORME
Gail M. Orme

BEVERLY OROZCO
Henry Orozco

CARLOS M. ORTIZ
Flavia R. and Martin Lorega, Jr. (2)

LENA OSBORNE
Sue Wagner

LOUISE LEVIN PACKARD
Rose Marie Decker

KATHY PALAGI
Beverly and Walter Blackmon

JOHN PARSLEY
Ellen and Harry Parsley

MARIA PARTIDA
Alice De Luna

JOHN D. PAYNE
Laura C. Elmer
Joan Payne
Jean L. and Marlene L. Sylva

ROSE HELEN PEASE
George J. Pease

JULIA PEDERSEN
Gerlev Pedersen (2)

VEOLA PELISSA
Marilyn and Ren Harris

PHILLIP PELLER
Tracy L. Peller

AURORA PEPI
Robert L. Pepi

ROBERT A. PEPI, SR.
Robert L. Pepi

ALBERTINE PERATA
Francine and Michael Chouinard (2)
Andrea and David Perata

FRANK PERATA
Francine and Michael Chouinard
Andrea and David Perata
Sandy Cahill

GEORGE A. PERRY
Linda I. Methven

JOSEPH PERRY, JR.
Vivian F. Perry

JOHN R. PERSHING
William Bernard Adamo*
Adult Day Services Staff
Nancy L. Brimhall
Barbara Galante
Veronna Ladd
Jeanine C. and Jack M. Meregalli
Karen and Mark Proteau

Celine and SuzAnne Regalia
Emily D. Schmidt
Joanne Sutro and Wayne Cain
Martha A. Wise
Anonymous

NANCY L. BRIMHALL
DEAN PERSONNE
Sherlyn and Dave Zumwalt

MAYNARD PETERS
Konnie and Bruce Peters

DIANE BRISEBOIS
PETERSON
Chateau Montelena Winery
Marilyn and Ren Harris

ROBERT PETROFF
Daniel Petroff

JEAN M. PHILLIPS
Maurine J. Zwemke (2)

EDNA V. PICKNEY
William Black
Sharon and Stanley Ghisletta
Charles Pinckney
Man Im and Ray Rhodes
Linda L. Rodman

MARION ADAIR PINEGAR
Anonymous

DOROTHY M. PINTER
James D. Williams*
Amber and Jack Piper
Louetta and James Langley

SOLANGE PIRIO
Betty P. and W. V. Ballentine
Lawrence W. Beard
Joanne MacDonnell
Marcella Matak
Louise Menegon
Vickie Verhalen and David Piro
Enrico Poort
Mary A. Reavis

ANNE E. PITTA
Margaret and Phil Kech

THOMAS PIVK
Andrea and Mark Miller

GRAEME D. PLANT
Susan B. Plant (2)

HENRY POCAI
Betty P. and W. V. Ballentine

EDNA E. POINELLA-BRESCIANI
Barbara and Ron Lausen (2)

JUNE POLLOCK
Sudie Pollock

LT. COL. PAUL E. POLLOCK
Sudie Pollock

GEORGE PRICE
Karen and Bernard Tejada

CLINTON PRIDMORE
Dale and George Cliff
Martha and Jack Hussey
Man Im and Ray Rhodes
Darlene and John Wheeler

MARILYN J. PRIDMORE
Josie and Jake Wheeler

RICHARD C. PRINCE
Barbara Galante

DAVID PUDEP
Jane and Chip Young

MARILYN FOURNIER
PUFFORD
Julie and Dominic Baracosa

JEAN PUSKAS
Josephine and Fritz Anthes

ELIZABETH QUANDT
Paula and Craig Libby

MAX QUAST
Katherine and Michael Quast

QUIMBY
Victoria Nelson

GLORIA S. "PEGGY" QUINN
Doris and Adelbert Ianziti
Greg Morgan

Nancy and Melvin Owyong
Lois M. Richwine
The Westervelt Company
C. Monica Wetmore

LINA QUINONES
Olga and Bill Keever

LENA RANDAZZO
Chrisanne Beebe and Steven Taddei (2)

PATRICIA RANDAZZO
Chrisanne Beebe and Steven Taddei (2)

LOUISE RAMPOLDI
Mary and Clemente Cittoni

MARY RATTO
Mary Devine
Rebecca and David Hudgins
Kevin O'Brien
Janet Wedekind

ELSE RAVN
Juanita Martin

ALBERT AND JEAN RE
Sandra and Gordon Sims (2)

HELEN EMMA REALE
Beverly and Walter Blackmon

MARILYN HALEY RECORD
John Yandell, Jr.

ANN REDDIX
Mary Alasia
Elvira Giampaoli
Louise Menegon
Debbie Owen

PAUL REDENS
Anne Redens

ROBERT M. REEDER
Candrah Smith

ELAINE AND EDWARD REGALIA
Celine and SuzAnne Regalia (2)

JUDY LYNN REILLY
Richard Reilly (3)

PATRICIA A. RENFROW
Denise A. Loughran

NORMA RETZLAFF
Eileen M. Hanson

ALBERT J. REFF
Karla M. Yates

BOYD RHODA
Betty Rhoda

LINA RICCHETTI
Debbie and Ben Vigil

MARTHA L. RICCI
Nilda Mulas

RONALD RICHARDS
Beatrice H. Eyler (2)

BARBARA RICHMOND
Coralee J. Nalley

LILLIE LAVERNE RIDDLE
Beverly and Walter Blackmon
Wanda and Robert Leveque
Susan Manheimer

TERENCE "TERRY" RILEY
Bette and Dale Acomb

VERA L. RILEY
Konnie and Bruce Peters

FRANCES ROBBINS
Susan and Paul Frank

LEILANI ROBERTSON
Kathleen and Kent Ruppert

RUBY ROBINSON
Carol and Bill Young

JIM AND TONY RODRIGUES
Clara B. Rodrigues

JAMES TRAVIS ROGERS, JR.
Elizabeth M. Rogers (3)
Travis Rogers

JOAN ROMBAUER
Josie and Jake Wheeler

JUANITA ROOMIAN
Robert Roomian

FRANK ROSA
Joan and Raymond Kranich

PHYLLIS ROSA
Steven Rosa (3)

OLIVER J. ROSE
Marsha McFall

RALPH ROSE
Margaret Skivington

MARK ROTH
Victoria Nelson

KATHRYN ROWDEN
Dana R. Hasson

JAMES RUSSELL, JR.
Dorothy M. Russell

DOROTHY AND HENRY RUTHNICK
Erika and Kian Tavakoli (2)

BALDEMAR SANCHEZ
Edwin A. Sanchez

OFELIA SANCHEZ
Edwin A. Sanchez (2)

HOWARD A. SAUER
Linda and Steven Velasco

DICK AND ANNA SAWYER
Belinda Bongaarts

JAKOB SCHICK
Vivien and Vilja Schick

RUTH SCHLIECKER
Roger F. Aylard

DONALD "SMITTY" SCHMIDT
Tracey L. Schmidt
Stacey and Raymond Edds
Anonymous (2)

JUANITA SCHNEIDER
William Schneider (2)

GILBERT J. SCHOENSTEIN, JR.
Maureen and Gilbert J. Schoenstein

MARGARET K. SCHOENSTEIN
Kathryn Dobie (2)

JOSEPH JOHN SCHOLL, JR.
Cathrine Scholl

FAYE LOGAN SCHULL
James Schull and Richard D. Buth

STERLING SCHUSTER
Diane L. Schuster

MARY CERVONE SCHWAKE
Dorothy V. Jensen

GWEN SCIUTTO
Wendy and Joseph Beltrami
Norma Beltrami
Cara and Tom Davies
Annie and Frank S. Emmolo
Anita and Henry Ghiringhelli
Carol Graff
Constance C. and Guy W. Kay
Rory and David Mellow

CARL "SLIM" SEELER
Sally L. Seeler (2)

L'VERE AND MARIO SERENI
Linda and Ronald Sereni

DOTTIE AND CHARLES SERGESON
James Scriven

PETER SERINO
Ellen and John Pinto

PENELOPE S. SETCHKO
Emily Cudaback

RALPH SHEETS
Colleen Roberts

THOMAS HOWELL SHELTON
Bryan Shelton,
Jonathon Shelton,
Jessica Shelton,
Camille Shelton, and
Trevor Mansfield

GEORGE SHEPARD
John Shepard

GRANT AND PHIL SHEPARD-LAMARCA
Stefanie E. Shepard-LaMarca (3)

OLEDA LOIS SHERIDAN
Oliver Sheridan

CHARLOTTE F. SHERMAN
Ralph M. Sherman

DWIGHT A. SHERWOOD
Carolyn D. Roberts

GEORGE M. SHIFFLER, JR.
Patricia A. Shiffler

LAUREN SHRIVE
Denise Flaherty

LILLIAN B. SIEGEL
Randi and Howard B. Siegel

LORENE SILKS
Debra and Ray Solarez

PAUL E. SILVA
Joseph N. Silva

ELAINE SILVERS
Adele Vaca

BILL SIMMS
William Black

JULIA A. SIMMS
William Black

WARREN G. SIMMS
Virginia H. Simms

TONY SIMONE
Emily Simone (2)

STEVEN SIMPSON
Anonymous

HARRY D. SMERNES
Todd Nelson
Jackie and Michael Oneil
Leonard J. Rothman
Rochelle Shadwick
Nancy A. Smernes

ANNA SMIGLE
Aegis of Napa

CAROLINE SMITH
Rianne and Vincent J. Pasquariello

JEANETTE M. SMITH
Stephanie and Daniel Lonergan

KEITH E. SMITH
Henrietta Bledsoe
Sandra J. Bollinger
Elizabeth and James Trood

FRITZ SNIDEMAN
Tomda Fund at Schwab Charitable

DOROTHY SODERHOLM
Donna and Robert Winchell

CHRISTOPHER J. SORENSEN
Dolores P. Bailey

CRISTINE SOUTHWORTH CASS
Judy Ohrt

JAMES SOUTHWORTH
Judy Ohrt

ROBERT SOUTHWORTH
Judy Ohrt

FRANK SOUZA
Joan and Hilbert Hubble

TONY SPARACINO
Bonny and "Tom" Thrower

JAMES SPAULDING
Denise Flaherty

WALLACE L. SPECHT
Becky Miller

HAROLD H. SPIELBERG
Shizue Spielberg (2)

JOSEPHINE H. SPIVEY
Peggy and Robert Anglin

GLADYS ST. JOHN
Maureen St. John

ROBERT "BOB" STANLEY
Mary and Clemente Cittoni

GEORGE E. STEARNS
Mary Anne and Joseph Dorchuck

LANI STEARNS
Tiffany Kenny

GEORGE A. STEIN
Billie and Marshall Jaeger

ALDONA STEPHENSON
Sue Ziemski

WANDA STEVENSON
Lee R. Crawford
Imogene Egner
Jon E. Johnson

DONNA GAIL GANDARA STICKNEY
Joanne Sutro and Wayne Cain

JERLEE "JERRY" STOCKTON
Shirley M. Glashoff
Janice and James Luce

JUNE STOHSNER
Diana and Gary Egkan

MATTHEW STOHSNER
Martha and Jack Hussey

PEGGY STOKEY
Paul Stokey

ANNE STRAIN
Betty P. and W. V. Ballentine

Linda and Jim Hunter

ELLEN STREICH
Anonymous

ROBERT JORDAN STREICH, SR.
Mary Ann "Sam" and Andrew Werback
Anonymous

IRIS STRICKLIN
Everett R. Stricklin (2)

ELLEN STROBEL
Else M. Mee

THE STRUBLE FAMILY
Eva M. Johnson

RODGER "TONY" STUART
Toni L. Stuart

BRYNN SULLIVAN
Gerry and Jeff Wood

ADAM SZMIDT
Jeanne and Andrew Szmidt
Mostafa J. Tabatabai
Darlene A. Rau (2)

JACK TADDEI
Joe Randazzo

JACK AND MADELINE TADDEI
Helen M. Van Gorder (2)
Chrisanne Beebe and Steven Taddei (2)

MADELINE TADDEI
Dewey Ellsworth
Debra and Ray Solarez
Chrisanne Beebe and Steven Taddei

Barbara Zloczewski
Joe Randazzo

VIRGINIA TALLMAN
Bette and Dale Acomb

CHARLES C. TAMBORNINI
Mary and Clemente Cittoni

RAYMOND ALBERT TARAP
Judy McCoy
Patricia and Joe Pridmore

JENNIFER TAYLOR
Phyllis L. Brace

JERRY TAYLOR
Sandra and Phillip Carlson
Eleanor and James Cobb
Denise and William Coffield
Susan C. Cole
Eleanore A. Dipietro
Dan and Nancy Duckhorn
Teresa Gaines
Fred and Sharon Hermann
Susan J. and Thomas G. Jinks
William Jones
Harold W. McAfee
Crystal and Barry D. McCall
Marjorie and Joseph R. Miller
Karen and Harry Millhouse
Patricia and James Patton
Millie Pease
Nancy and Kevin Reidy
Keresa Richardson

John Rusak
Marjorie and Frederick Schweizer
Cynthia and William Sites
Pat Taylor
Lise and Tim Turner
Emily and William White
Peggy Yates

NICOLE TAYLOR
Colette M. Hutchinson (4)

BEN TCHAIKOWITZ
Helen and Thomas McDermott

TRUDIE TEAGUE
Loretta and James Fairbairn (2)
Larry Teague (2)

MURIEL S. TEARLE
Mel Tearle

CRIS TEJADA
Karen and Bernard Tejada

RUTH TEJADA
Karen and Bernard Tejada (2)

ISTVAN TELEGDY
Maryll Telegdy

PETER TENNIS
Rose J. Comerding

VERLAIN TERRELL
Jennifer and Jason McConchee

JAMES THIEL
Peggy M. Chambers
Rosemary Meinholz

CARL THOMAS
Carolyn S. Redpath (2)

EDWARD W. THOMAS
Beth Braby
Carolyn and Dean McCoid
Diva and Michael O' Connor
Margaret and William Yetter

JOHN THOMAS
E. Jean and Danny Miller

NOREEN THOMAS
Nancy L. Brimhall

BARBARA J. THOMPSON YOUNG
Paula and Paul Mensch

ARTHUR ROBERT THOMPSON, JR.
Sandra J. Bollinger
Francine and Michael Chouinard
Pat A. Conti
Joanne and Frank Cuellar, Jr.
Carol Frommelt
Billie and Marshall Jaeger
Nancy and David Wildman
Diane L. Risley

BARBARA J. THOMPSON-YOUNG
Paula and Paul Mensch

GEORGE I. THORNBERRY
Sharon Sanguinetti and William Kreutz

THERESA L. TICEN
Sheila and Scott Ticen

DIANNE TIMKO
Joseph Bullock

DAWN TOGNOLI
Denise A. Loughran

EDA TONELLA
Betty P. and W. V. Ballentine
Beverly A. Borges
Lynn Cangemi
Mary and Clemente Cittoni
Pat A. Conti
Annie and Frank S. Emmolo
Anita and Henry Ghiringhelli
Marilyn and Ren Harris
Sharon K. and Dennis W. Harter
Judith and John Ladd
Alyssa and Elton Morel
Michael Morisoli
Emily D. Schmidt
Marjorie and Frederick Schweizer
Michael J. Werle

DORIS V. "ASHLEY" TOZER
Nancy Norager
Napa Valley Needlers, Inc.
Walton Family Fund at NVCF

RITA TROTTER
Joseph N. Silva

LOIS TRIHUB
Rhonda and Frank Kingman (2)

KAREN TRIVETT
Nancy Aaen
Darleen and William Hemmerlin

ELAINE E. TRUJILLO
Dorothy Northey

DAVID S. TUCKER, JR.
Billie A. Hewitt
Ann Tucker

PHYLLIS D. TURNER
Howard R. Turner

KATHRYN GLEBOW TWEED
Trish and John Lyon

CARMEN AND ALFONSO VALENCIA AND THE FAMILIA VALENCIA
Laura Valencia

JOSEPH R. VALLERGA
Greta J. Vallerga (2)

REX VAN CLEVE
Lavonne M. Van Cleve

RON W. VAN CLEVE
Lavonne M. Van Cleve

JULIAN VANNI
Emily D. Schmidt

MARY LOUISE VERASCONI
Raymond Huerta

WALTER VIADER
Delia Viader

FRANCO VIANELLO
Dorothy M. Wurz

SHIRLEY VINCENT
Jean L. Charlton
Lewis-Gestl Family
Judith Selby
W. A. Steenberg

LOUISE WAGNER
Doral J. Fisher*
Donna M. Sims

MIGNON WAGNER
Jayde and Edward L. Morrell
Antje and Helmut Oja

ARDIS H. WALKER
Shelly and Donald Bacci

WES WALKER
Jane and David Meyers

DEBRA ANN WALLER-PARKS
Judi and Neil Leslie (2)
Geri and Mike Waller (2)

LU WALSH
Barbara J. Abate

LINDA WALTER
Gerry and Jeff Wood

JUDITH P. WALTER-BURKE
Patrick L. Burke

WILLIAM F. "BILL" WARD
Carol and Joseph Ward

BETTY WARE
Selma and Billy Cooney
Veronna Ladd
Napa Valley Welcome Club
Jo Seifert

WARREN WARNER, III
Ricci M. Hayes (3)

LYNNE LASATER WASLOHN
Bette V. Benton
Cecie and Dick Davis
Elizabeth and Elmer Ellis
Judith Flynn
Marion Kittelson-Villanueva

CHARLIE WATKINS
Susan W. Riordan

EARNEST CHARLES WATKINS
Janice and James Tidgewell (2)
Peggy V. Watkins

LEONA KATHERINE WATTS
Donald R. Cobb
John D. Payne*
Roxanne Quirk

PAUL D. WAXMAN
Audrey L. Waxman

ROBERT N. WEYERHAEUSER
Gail V. Randol

MICHAEL C. WEBB
Anita Webb

GREG WEDNER
Dianna Azzolina (2)
Lorraine and Richard Bianchi
Jeanne and Ernest Cabral
Debbie and Scott Clifton
Allison and Andre Crisp
Chris M. Cromartie
Laurie Dominguez
Kathryn Fletcher
Jeff Freedman
Stephen Gallion
Lois and Anthony Gouveia
Grgich Hills Estate
Mark Kelley
Tim Laird
Marlene Lampert
Philip Markert
Patsy McGaughy and John Marx
Kim Peters
Robert Reed
Roberta Rowe
Linda and Ronald Sereni
Michael Smith
Diane Studna
Carolyn and Frank J. Vineyard
Mary Walker
Bob Ward
Maryanne Wedner
Dannis Woliver-Kelley
Spencer Weiss

RICHARD WEIGUM
Shirley Souza

WARREN I. WETTERLUND
Margaret H. Wetterlund

GEORGE C. WHALEY
Lynne Langerhams and Marc Whaley

BENJAMIN OSCAR WHICHARD
Connie A. and David C. Courtright
Donna Maionchi
Colleen J. May
Francine and Gregory Thatch

CAROLYN E. WHIPPLE
Laura A. Gianini

RONALD V. WHITE
Jeanne and Nicholas Efstatis
W. Faye and John Fittipoldi, Jr.
Kim J. McPherson
Wendy L. Mednick
Lauren and John K. Rupnik
Wendy and Richard Walleigh

ALAN L. WIDENER
Shirley M. Glashoff

MILDRED IRENE WILLET
Gayle M. and Harry W. Willett

BEVERLY WILLIAMS
Janis and Michael Daly

IRVING WILLIAMS
Oddrun and Michael Fanzone

JOHN WILLIAMS
Anonymous (2)

KEN WILLIG
Sherlyn and Dave Zumwalt

MAXINE WILSON
Marian and Larry Partridge

JOHN WILSON
Anonymous

DAVID WINCKLER
Mary B. Wills (2)

GARY A. WINTERS
Joan F. Winters

GIL AND LINDA WOLF
Carole and James Wolf

EMMA WOLLESON
Louise M. Delfino (3)

ANN AND RAY WOOD
Helen M. and Ted T. Tyson
Raymond E. Wood
Helen M. and Ted T. Tyson (3)

JOSEPH L. WOOD
Sandra K. Carden

JODIE D. WRAY
Phyllis and Arnold Vallerga

ALEXANDER YATCHMENOFF, JR.
Roshal Yatchmenoff

BART J. YATCHMENOFF
Roshal Yatchmenoff

MARY ANN YEAGER
Carolyn P. Hamilton

JULIE YIP
Arlene and Cliff Travis

GEORGE A. YOST
Millie Pease

THOMAS YOUNG
Martha and Richard Pastcan

KATHLEEN ZANNINI
Rudy Zannini

SCOTT W. ZUMWALT
Alice Galleron
Marilyn and Ren Harris
Nina and Valen Threadgall (2)
Sherlyn and Dave Zumwalt

* Deceased



Collabria Care
Collabria Hospice

Formerly Napa Valley Hospice & Adult Day Services

414 South Jefferson Street
Napa, California 94559

Nonprofit Org
US Postage
PAID
Napa, CA
Permit #479



Printed on Recycled Paper

If you wish to receive our publications electronically or be removed from our fundraising mailing list, please contact the Development Department by email at development@collabriacare.org or toll free at 800-451-4664.

"Regarding your new name... Nicely done! Congratulations both on all the effort that it took to get to this place and the end result! You are providing excellent leadership to Napa, and to the state of California!"

– Judy Thomas, JD, CEO
Coalition for Compassionate Care of California



Collabria Care

414 SOUTH JEFFERSON STREET